

**CDM512D/CDM514D**  
**ROAD ROLLER**

**SPARE PARTS BOOK**

## PREFACE

Thank you for selecting our products.

The Parts Book is specifically for the CDM512D/CDM514D road roller with standard configuration, which provides relevant detailed information about all systems/assemblies/parts, including Chinese/English description, specification and quantity per unit etc.

Non-standard products configured with other brand diesel engine, transmission, axles and optional parts, can cause some changes in the systems/assemblies/parts, which are not listed in the Parts Book. Product improvement or supplier alteration might make parts different. If you have any question about the book, please contact us or your nearest dealer.

In addition to parts description, specification and quantity, the Serial Number and Manufacture Date of specified machine should be supplied with spare parts order, so that we can deliver you correct parts in time.

Customers are sincerely requested to give us suggestions with contact information on the back cover.

LONKING HOLDINGS LIMITED

July, 2014

# CONTENTS

I. Vibration drum assembly	1
II. Gibbous drum assembly	5
III. Front frame assembly	7
IV. Front drive assembly	10
V. Rear drive assembly	12
VI. Rear frame assembly	14
VII. Engine system I(general)	19
VIII. Engine system II(plateau)	25
IX. Control system	32
X. Hydraulic oil tank assembly	34
XI. Articulated bracket assembly	37
XII. Hydraulic vibration system	40
XIII. Hydraulic drive system	42
XIV. Cab assembly	46
XV. Cab door assembly	52
XVI. Operating board system	56
XVII. Hood assembly	60
XVIII. Hydraulic steering system	63
XIX. Scraper system	66
XX. Electric system	68



## I. Vibration drum assembly

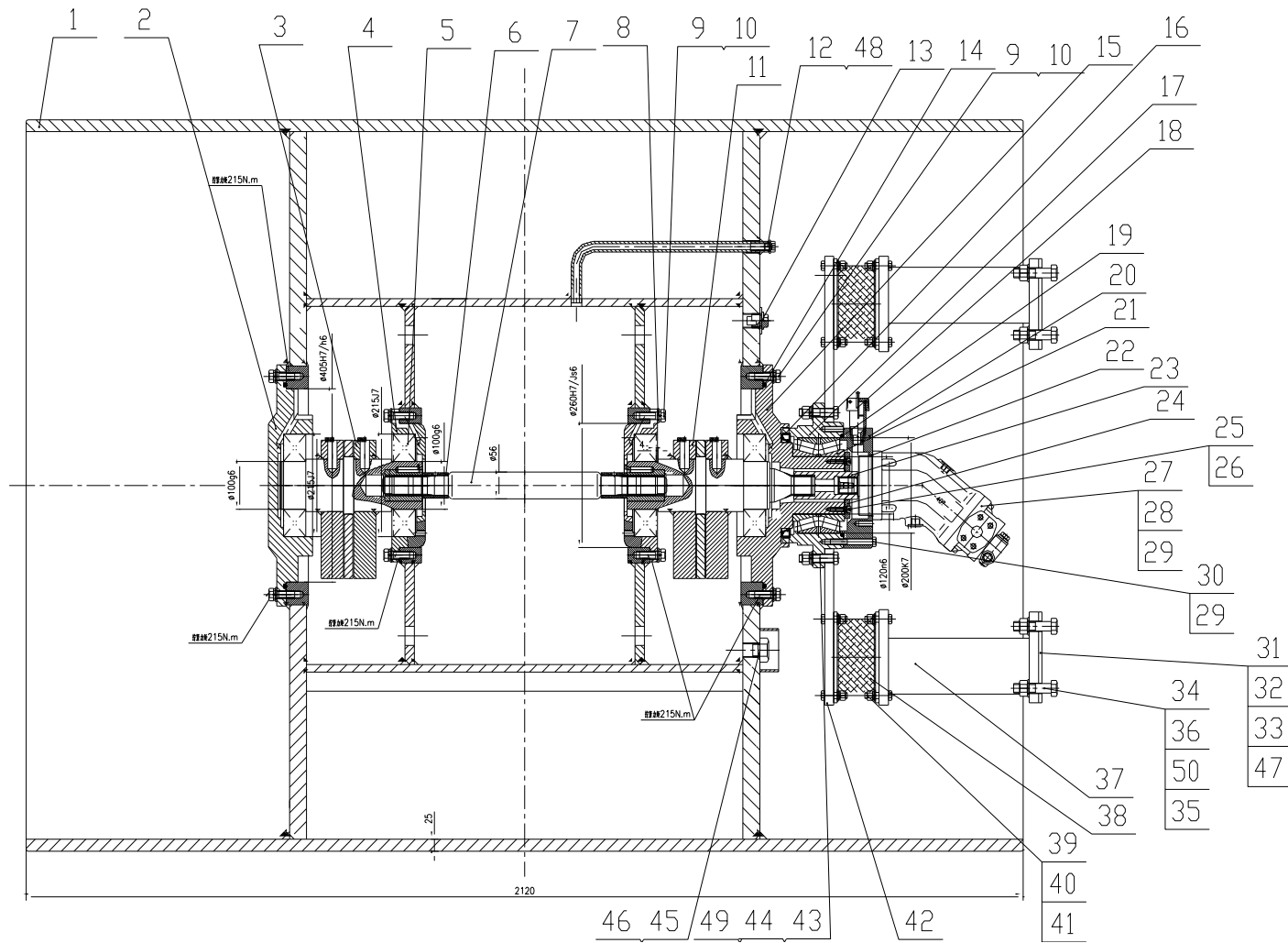


Fig.01		Vibration drum assembly 振动轮总成			Remarks
Item	当前 Current No.	English Description	Chinese Description	Qty	先前 Used No.
1	LG512D.01 I .01	Drum assembly (for CDM512D)	振动轮焊接(CDM512D 用)	1	
	LG514D.01.01	Drum assembly (for CDM514D)	振动轮焊接(CDM514D 用)	1	
2	LG512D.01 I -001	Outer bearing bracket	外轴承座	1	
3	LG514B.01X.02	Left vibration exciter	左激振器	1	
4	LG510B.01-002	Inner bearing bracket	内轴承座	2	
5	GB283	Bearing NJ320E	轴承 NJ320E	4	
6	LG510B.01-003	Rubber sleeve	橡胶套	2	
7	LG512D.01 I -002	Drive shaft	驱动轴	1	
8	LG510B.01-006	Lock spacer	止动垫片	8	
9	GB/T5783	Bolt M16×45	螺栓 M16×45	24	
10	GB/T93	Washer 16	弹垫 16	32	
11	LG514B.01X.03	Right vibration exciter	右激振器	1	
12	LG520A.30.01-001	Plug	堵头	1	
13	LG520A.30.01.07	Magnetism bolt	磁螺塞	2	
14	GB/T3452.1	O-ring $\phi$ 417×7	O 形圈 $\phi$ 417×7	2	
15	LG510B.01-001	Outer bearing bracket	外轴承座	1	
16	TC180*220*18	Oil seal 180×220×18	油封 180×220×18	1	
17	LG520A.30.01-006	Driving bearing bracket	驱动轴承座	1	

Fig.01		Vibration drum assembly 振动轮总成			Remarks
Item	当前 Current No.	English Description	Chinese Description	Qty	先前 Used No.
18	LG520A.30.01.02	Breather	通气器	1	
19	GB/T3452.1	O-ring $\phi 206 \times 5.3$	O 形圈 $\phi 206 \times 5.3$	1	
20	LG520A.30.01-009	Motor bracket	马达座	1	
21	LG520A.30.01.11	Biserial tapered roller bearing	双列圆锥滚子轴承 Hs718	1	
22	GB/T3452.1	Seal ring $125 \times 2.65$	密封圈 $125 \times 2.65$	1	
23	LG520A.30.01-007	Motor spline sleeve	马达花键套	1	
24	LG520A.30.01-008	Bearing ring	轴承挡圈	1	
25	GB/T70.1	Socket head cap screw $M8 \times 25$	内六角螺钉 $M8 \times 25$	8	
26	GB/T93	Washer 8	弹垫 8	8	
27	A2FM56	Vibration motor	振动马达	1	
28	GB/T5783	Bolt $M12 \times 40$	螺栓 $M12 \times 40$	4	
29	GB/T93	Washer 12	垫圈 12	11	
30	GB/T5782	Bolt $M12 \times 90$	螺栓 $M12 \times 90$	7	
31	LG512D.01-007	Adjusting washer (2)	调整垫片 (2)	4	
32	LG512D.01-008	Adjusting washer (3)	调整垫片 (3)	4	
33	LG512D.01-009	Adjusting washer (5)	调整垫片 (5)	6	
34	GB/T5782	Bolt $M20 \times 90$	螺栓 $M20 \times 90$	12	
35	GB/T97.1	Washer 20	垫圈 20	12	

Fig.01		Vibration drum assembly 振动轮总成			Remarks
Item	当前 Current No.	English Description	Chinese Description	Qty	先前 Used No.
36	GB/T889.1	Nut M20	螺母 M20	12	
37	CDM512D.01.01	Connecting bracket weldment	连接架焊合	2	
38	16B	Shock absorber	减振器	4	
39	GB/T5783	Bolt M12×50	螺栓 M12×50	32	
40	DIN6796	Washer 12	垫圈 12	32	
41	GB/T889.1	Nut M12	螺母 M12	32	
42	LG512D.01 I -003	Support board	支承板	1	
43	GB/T5782	Bolt M16×70	螺栓 M16×70	8	
44	GB/T6170	Nut M16	螺母 M16	8	
45	LG520A.30.01.03	Oil pointer	油标	1	
46	JB982-1977	Bonded washer 30	组合垫圈 30	1	
47	LG512D.01 I -004	Spacer shim (1)	调整垫片 (1)	4	
48	JB/T982	Bonded washer 16	组合垫圈 16	1	
49	DIN6796	Washer 16	垫圈 16	8	
50	DIN6796	Washer 20	垫圈 20	12	



**II. Gibbous drum assembly (Optional)**

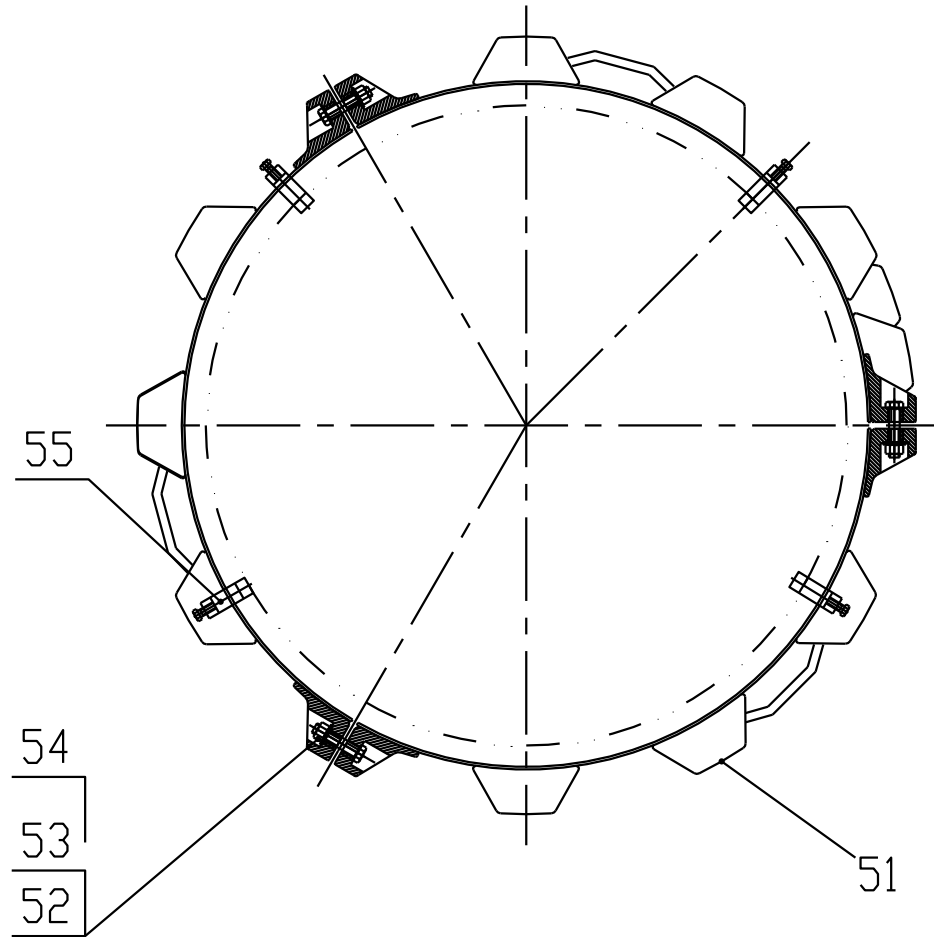


Fig.02		Gibbous drum assembly 凸块轮总成			Remarks
Item	当前 Current No.	English Description	Chinese Description	Qty	先前 Used No.
51	LG520D.30 I .01	Gibbous drum weldment	凸块轮焊合	1	
52	GB/T5782	Bolt M24×120	螺栓 M24×120	18	
53	DIN6796	Washer 24	垫圈 24	18	
54	GB/T6170	Nut M24	螺母 M24	18	
55	LG520D.30.02	Clamp assembly	夹板总成	8	

## III. Front frame assembly

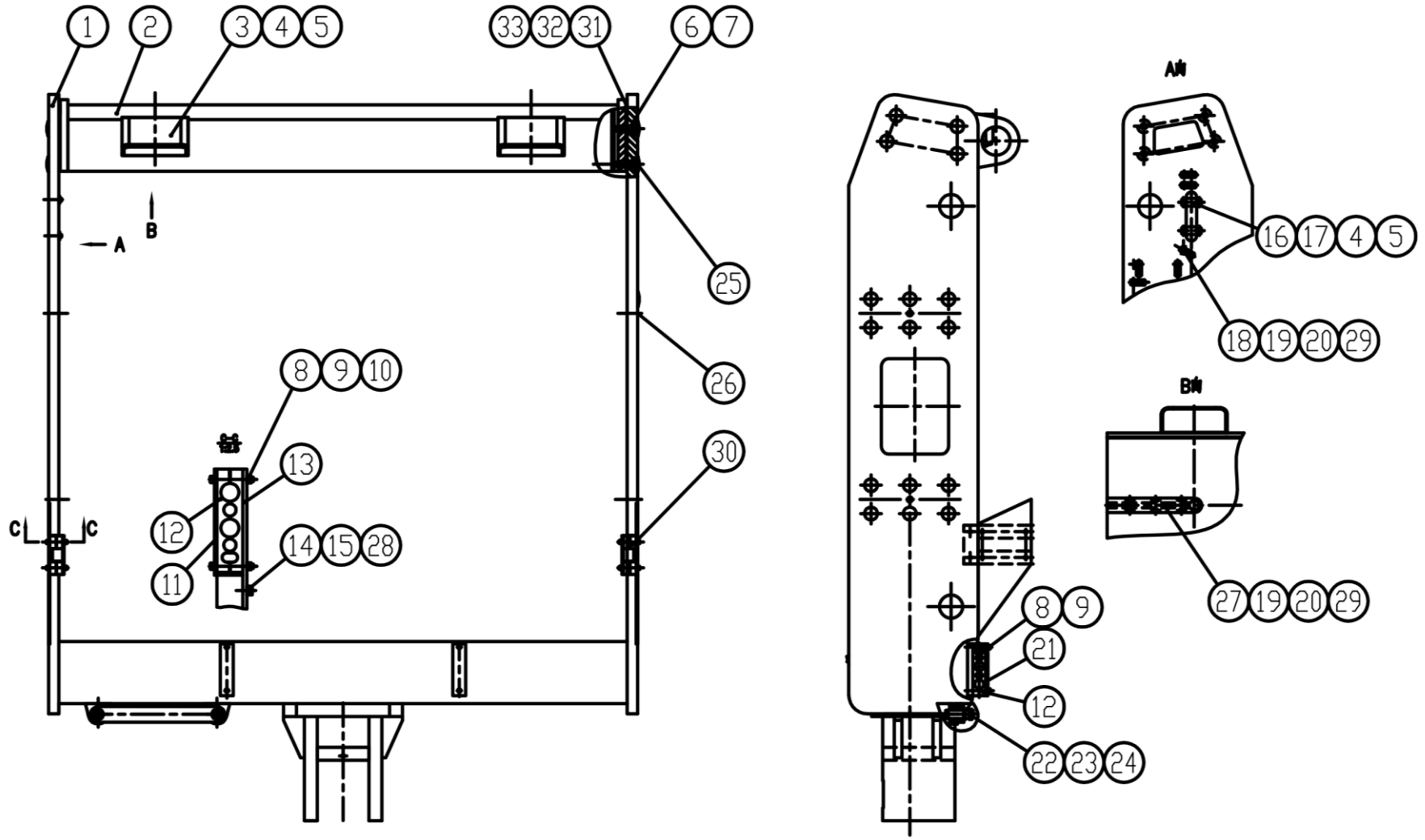


Fig.03		Front frame assembly 前车架总成			Remarks
Item	当前 Current No.	English Description	Chinese Description	Qty	先前 Used No.
1	CDM512D.05.02	Front frame weldment (for CDM512D)	前车架焊合 (CDM512D 用)	1	
	CDM514D.05.02	Front frame weldment (for CDM514D)	前车架焊合 (CDM514D 用)	1	
2	CDM512D.05.01	Front beam weldment (for CDM512D)	前横梁焊合 (CDM512D 用)	1	
	CDM514D.05.01	Front beam weldment (for CDM514D)	前横梁焊合 (CDM514D 用)	1	
3	XP261	Combination lamp	单大灯	2	
4	GB/T818	Screw M6×10	螺钉 M6×10	4	
5	GB/T97.1	Washer 6	垫圈 6	4	
6	GB/T5782	Bolt M20×65	螺栓 M20×65	8	
7	DIN6796	Washer 20	垫圈 20	8	
8	GB/T70.1	Screw M8×75	螺钉 M8×75	12	
9	DIN6796	Washer 8	垫圈 8	12	
10	GB/T6170	Nut M8	螺母 M8	8	
11	LG512D.05-001	Left board	护板	2	
12	LG520D.05-002	Holding block	夹持块	6	
13	LG520D.05-003	Support board	支板	2	
14	GB/T5783	Bolt M10×25	螺栓 M10×25	4	
15	GB/T93	Washer 10	垫圈 10	4	
16	LG520D.05-005	Light wire clamp assembly	灯线压板总成	2	

Fig.03		Front frame assembly 前车架总成			Remarks
Item	当前 Current No.	English Description	Chinese Description	Qty	先前 Used No.
17	GB/T93	Washer 6	垫圈 6	4	
18	LG853.01-005	Cable clamp	线夹	8	
19	GB/T5783	Bolt M8×16	螺栓 M8×16	14	
20	GB/T93	Washer 8	垫圈 8	14	
21	LG520D.05-007	Press plate	压板	2	
22	LG520A.30-005	Steering lock pin	转向锁销	2	
23	LG520D.05-008	Steering lock	转向锁板	1	
24	GB/T91	Cotter 5×50	开口销 5×50	2	
25	LG520D.05-009	Rubber cover	橡胶盖	32	
26	28X18	Rubber cover with a hole	橡胶孔盖	4	
27	CDM512D.05-004	Cover plate	盖板	1	
28	GB/T97.1	Washer 10	垫圈 10	4	
29	GB/T97.1	Washer 8	垫圈 8	14	
30	LG512D.05-002	Subplate	垫板	2	
31	CDM512D.05-001	Adjusting shim A	调整垫片 A	2	
32	CDM512D.05-002	Adjusting shim B	调整垫片 B	2	
33	CDM512D.05-003	Adjusting shim C	调整垫片 C	2	

### IV. Front drive assembly

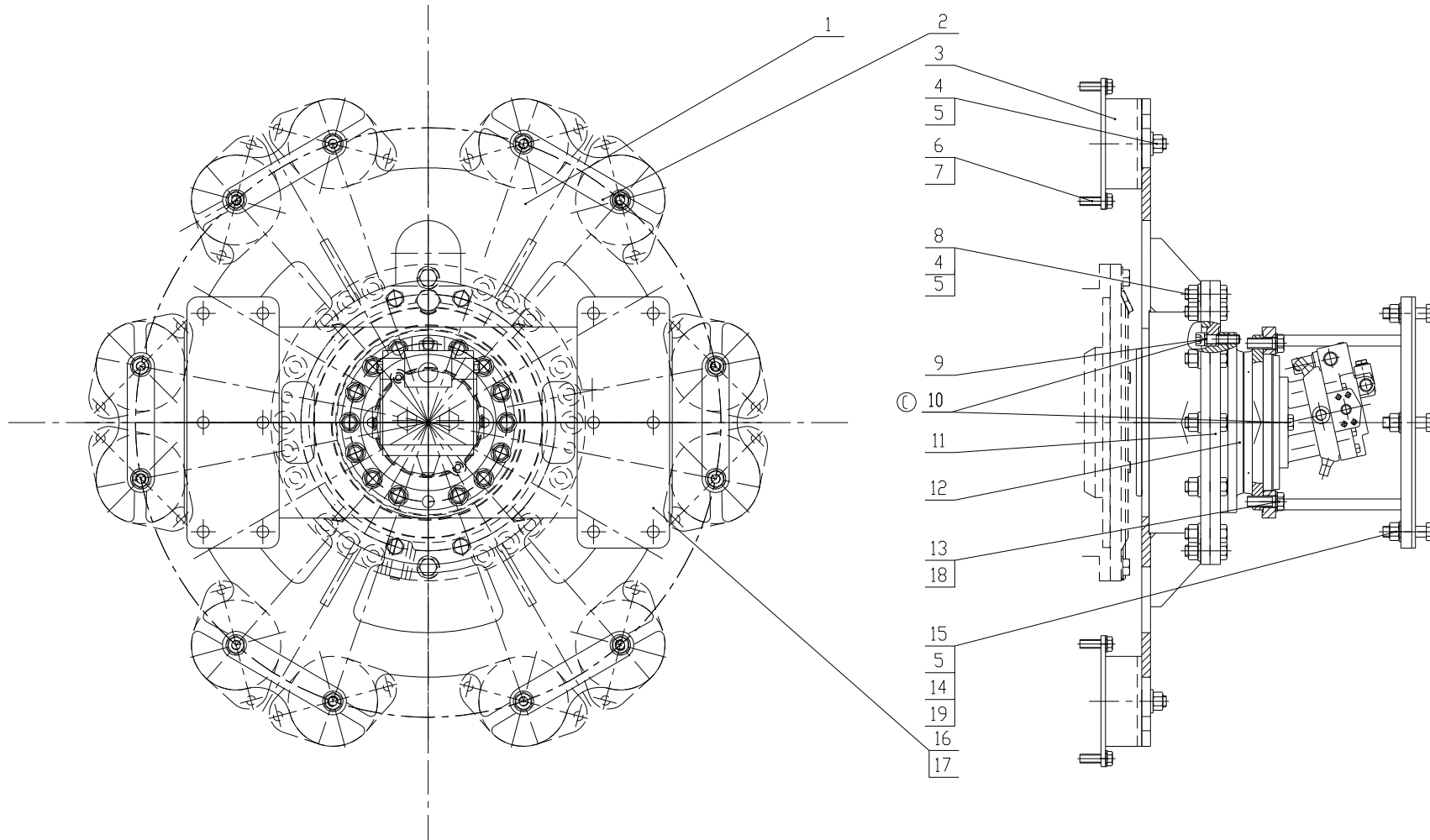


Fig.04		Front drive assembly 前驱动总成			Remarks
Item	当前 Current No.	English Description	Chinese Description	Qty	先前 Used No.
1	LG512D.02.01	Drive disc weldment	驱动盘焊合	1	
2	LG512D.02-002	Lock board	锁板	6	
3	108010019	Shock absorbing block	减振块	12	
4	GB/T6170	Nut M20	螺母 M20	24	
5	DIN6796	Washer 20	垫圈 20	36	
6	GB/T5783	Bolt M16×50	螺栓 M16×50	24	
7	DIN6796	Washer 16	垫圈 16	24	
8	GB/T5782	Bolt M20×65	螺栓 M20×65	12	
9	GB/T70.1	Bolt M16×65	螺栓 M16×65	16	
10	GB/T93	Washer 16	垫圈 16	18	
11	LG512D.02-001	Connecting disc	连接盘	1	
12	A6VE55	Drive motor	驱动马达	1	
13	GB/T5783	Bolt M20×55	螺栓 M20×55	16	
14	GB/T97.1	Washer 20	垫圈 20	12	
15	GB/T5782	Bolt M20×80	螺栓 M20×80	12	
16	LG512D.02.02	Connecting bracket	连接架	1	
17	LG512D.01-007	Adjusting shim	调整垫片 (2)	1	
18	GB/T93	Washer 20	垫圈 20	16	
19	GB/T889.1	Nut M20	螺母 M20	12	

### V. Rear drive assembly

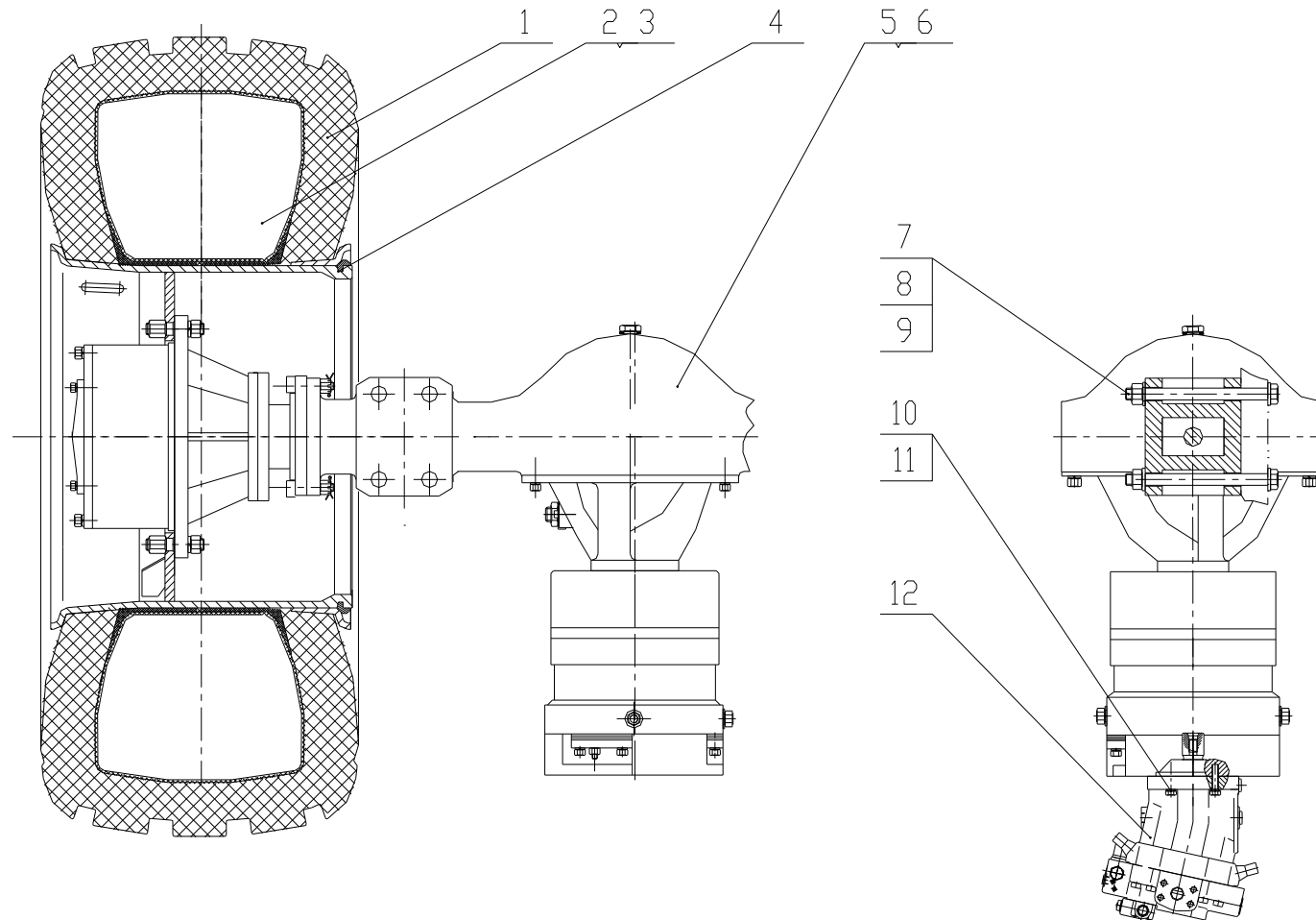




Fig.05		Rear drive assembly 后驱动总成			Remarks
Item	当前 Current No.	English Description	Chinese Description	Qty	先前 Used No.
1	23.1-26-8	Tire	冲水轮胎(8层)	2	
2	NaCl	NaCl	氯化钠	2	
3	H2O	H2O	水	2	
4	LG514B-20-26	Rim	轮辋	2	
5	PS50.64D	Axle	LG512D 驱动桥	1	
6	GL-585W/90	Gear oil	车辆齿轮油	1	
7	LG530PH.04.04-007	Bolt	螺栓	8	
8	DIN6796	Washer 24	垫圈 24	8	
9	GB889	Nut M24	螺母 M24	8	
10	GB/T5785	Bolt M12×1.5×50	螺栓 M12×1.5×50	4	
11	GB/T93	Washer 12	垫圈 12	4	
12	A6VM80EZ4/63W-VAB027HB	Motor	桥驱马达	1	

**VI. Rear frame assembly**

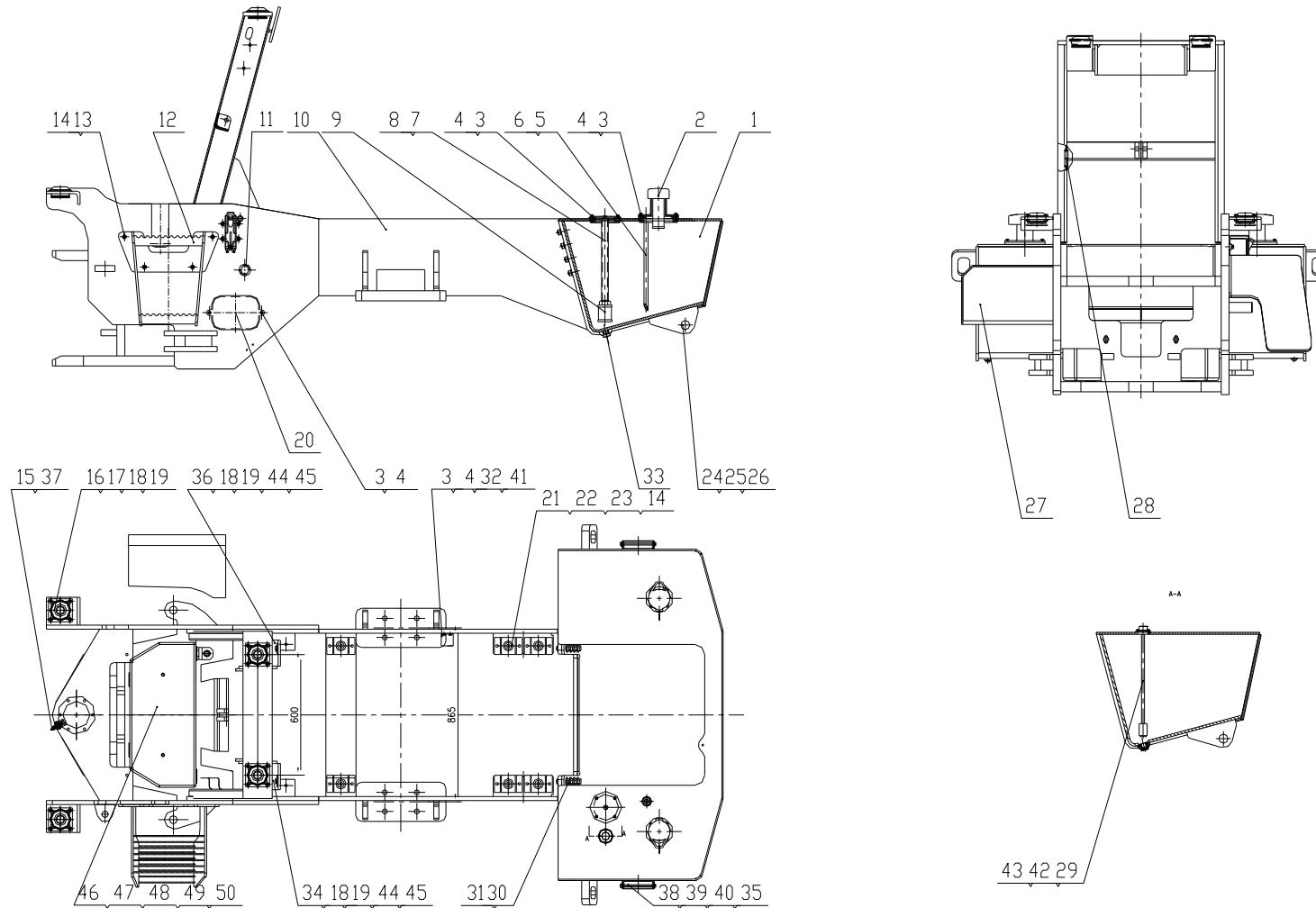


Fig.06		Rear frame assembly 后车架总成			Remarks
Item	当前 Current No.	English Description	Chinese Description	Qty	先前 Used No.
1	LG512D.06.02	Fuel tank weldment (for CDM512D)	燃油箱焊接 (CDM512D 用)	1	
	LG514D.06.02	Fuel tank weldment (for CDM514D)	燃油箱焊接 (CDM514D 用)	1	
2	TK16-11	Air filter	空气滤清器	2	
3	GB/T5783	Bolt M8×20	螺栓 M8×20	18	
4	GB/T93	Washer 8	垫圈 8	18	
5	LG520D.06.05	Oil return pipe weldment	回油管焊合	1	
6	JB/T982-1977	Bonded washer 30	组合垫圈 30	1	
7	LG520D.06.04	Suction cover weldment	吸油盖焊合	1	
8	GB/T3452.1	O-ring 95×5.3	O 形圈 95×5.3	1	
9	WU-63X80-J	Suction filter	吸油过滤器	1	
10	LG512D.06III.01	Rear frame weldment	后车架焊接	1	
11	LG520D.06-005	Sleeve	隔套	1	
12	LG512D.06.03	Pedal weldment	脚踏焊合	1	
13	GB/T5783	Bolt M12×25	螺栓 M2×25	4	
14	GB/T93	Washer 12	垫圈 12	16	
15	JB/T7940.1	Oil cup M10×1	油杯 M10×1	2	
16	6170111	Shock absorber	减震器	4	
17	GB/T5783	Bolt M10×35	螺栓 M10×35	16	

**VI. Rear frame assembly**

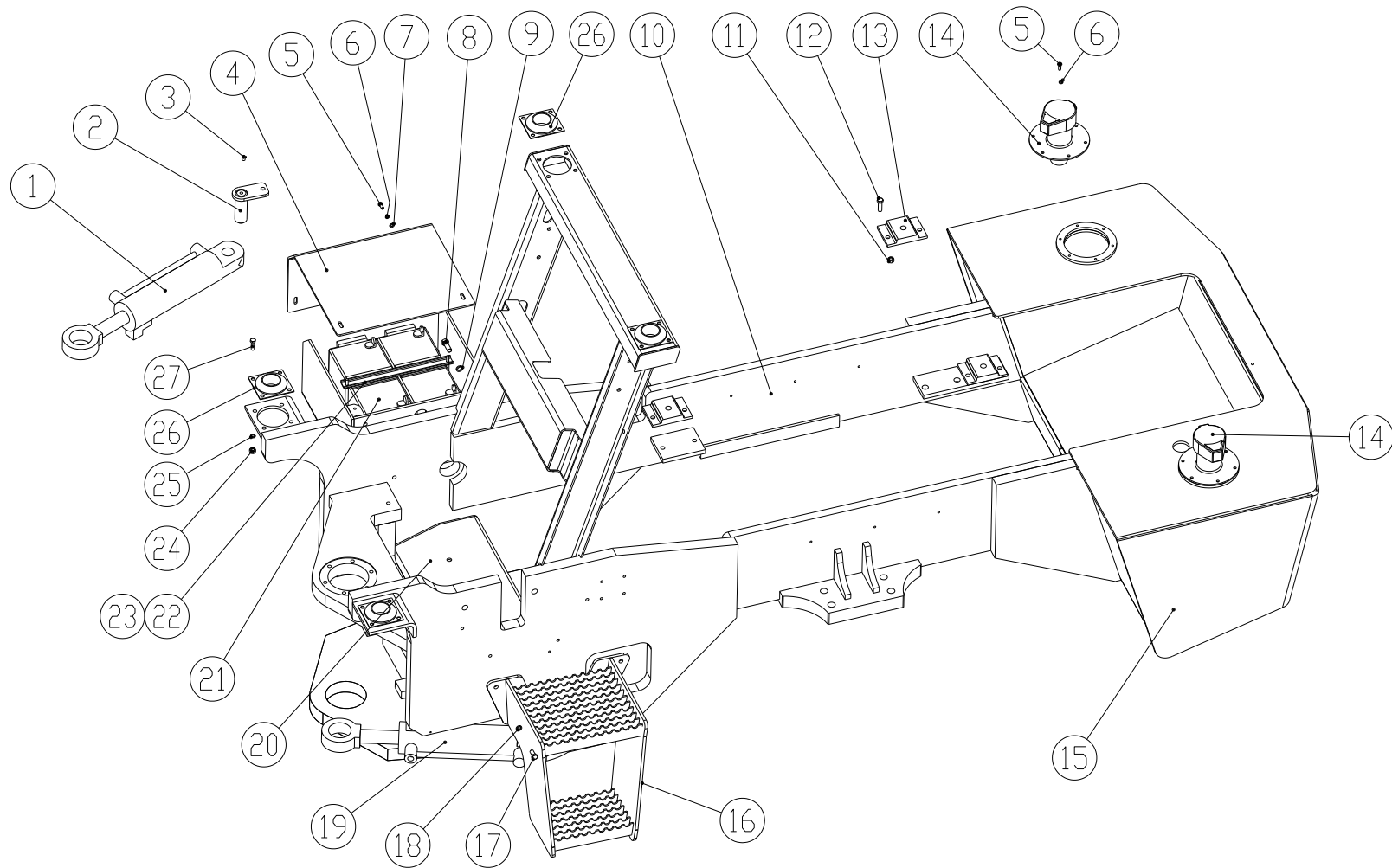


Fig.06		Rear frame assembly 后车架总成			Remarks
Item	当前 Current No.	English Description	Chinese Description	Qty	先前 Used No.
18	GB/T93	Washer 10	垫圈 10	24	
19	GB/T6170	Nut M10	螺母 M10	16	
20	LG520D.06-006	Dam-board	挡板	1	
21	EA120E-120	Absorber	减振器	6	
22	GB/T5783	Bolt M12×40	螺栓 M12×40	12	
23	GB/T6170	Nut M12	螺母 M12	12	
24	GB/T882	Pin 40×120	销 40×120	1	
25	GB/T97.1	Washer 42	垫圈 42	1	
26	GB/T91	Cotter pin 8×50	开口销 8×50	1	
27	LG520D.06.03	Battery box assembly	电瓶箱装配总成	1	
28	LG520D.06-007	Sleeve	隔套	1	
29	LG520D.06-004	Oil level sensor	油位传感器	1	
30	GB/T5783	Bolt M16×40	螺栓 M16×40	12	
31	DIN6796	Washer 16	垫圈 16	12	
32	LG512D.06-001	Hot water valve support	热水阀支架	1	
33	LG520A.31.04.02	Greasy blockage assembly	油堵总成	2	
34	LG510B.06.02	Left connecting base weldment	左联接座焊合	1	
35	GB/T97.1	Washer 10	垫圈 10	20	
36	LG510B.06.03	Right connecting weldment	右联接座焊合	1	

Fig.06		Rear frame assembly 后车架总成			Remarks
Item	当前 Current No.	English Description	Chinese Description	Qty	先前 Used No.
37	CDM512D.06-001	Grease fitting seat	黄油嘴座	2	
38	LG856.13.07.09-001	Pedal plate	脚踏板	2	
39	LG856.13.07.09-003	Pedal plate pin	脚踏板销轴	2	
40	GB/T91	Cotter pin 3.2x32	开口销3.2x32	2	
41	GB/T6170	Nut M8	螺母M8	2	
42	GB/T818	Screw M5x10	螺钉M5x10	4	
43	GB/T93	Washer 5	垫圈5	4	
44	GB/T5783	Bolt M10x45	螺栓M10x45	8	
45	GB/T96.1	Washer 10	垫圈10	16	
46	LG520D.06-001	Front balance block (for CDM514D)	前加重块 (CDM514D 用)	1	
47	LG520D.06-002	Fixed plate (for CDM514D)	固定板 (CDM514D用)	2	
48	GB/T5782	Bolt M16x100 (for CDM514D)	螺栓M16x100 (CDM514D用)	2	
49	DIN6796	Washer 16 (for CDM514D)	垫圈16 (CDM514D用)	6	
50	GB/T5783	Bolt M16x50 (for CDM514D)	螺栓M16x50 (CDM514D用)	4	
51	GB/T5782	Bolt M10x70	螺栓M10x70	2	
52	LG520D.07-006	Spacer pipe	垫管	2	
53	LG520D.07-007	Vent pipe	透气管	1	
54	JB/T8870	Clamp (Φ13-19)	卡箍(Φ13-19)	4	
55	LG520D.07-008	Vent pipe	透气管	1	

## VII. Engine system I (general)

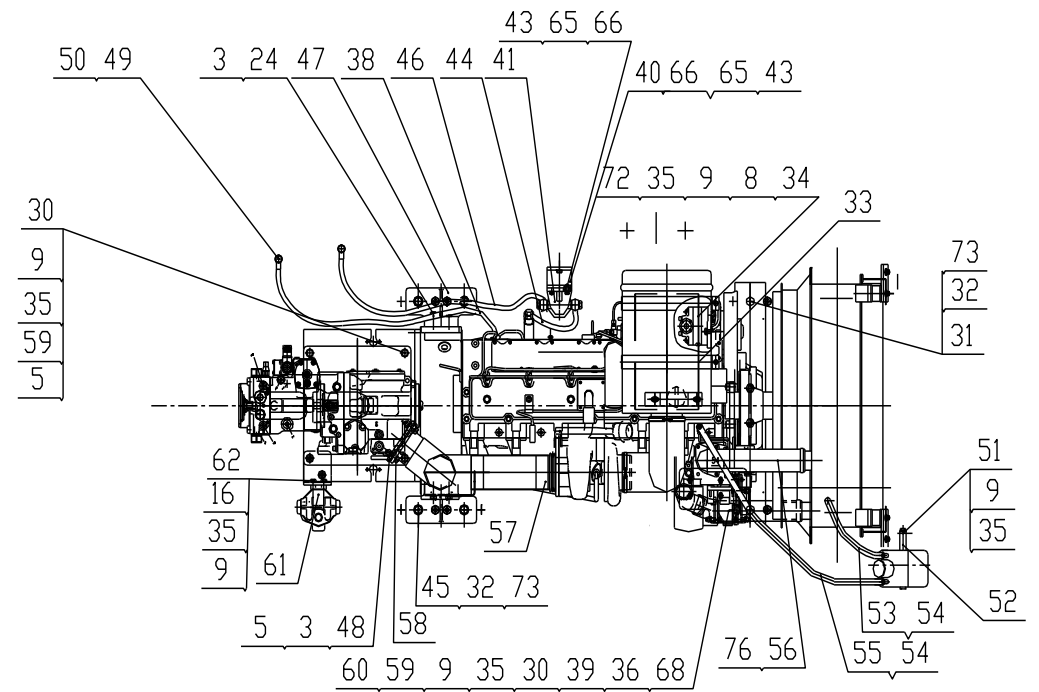
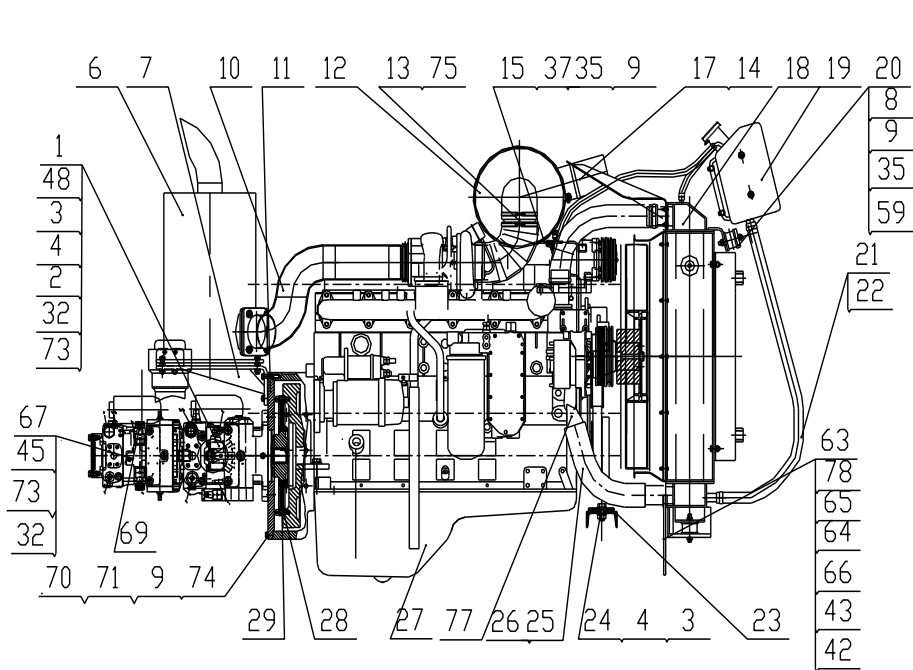


Fig.07		Engine system I (general) 发动机连接 一 (普通型)			Remarks
Item	当前 Current No.	English Description	Chinese Description	Qty	先前 Used No.
1	A4VG71HWDL1/32R-NAF02F071D-S	Drive pump	驱动泵	1	
2	GB/T5783	Bolt M16x45	螺栓 M16x45	2	
3	GB/T93	Washer 12	垫圈12	18	
4	GB/T97.1	Washer 12	垫圈12	6	
5	GB/T6170	Nut M12	螺母 M12	7	
6	LG512D.07.01	Mufler	消声器	1	
7	LG512D.07.02	Mufler bracket	消声器支架	1	
8	GB/T5783	Bolt M10x35	螺栓 M10x35	4	
9	GB/T93	Washer 10	垫圈10	33	
10	LG512D.07.03	Exhaust pipe assembly	排气管装配	1	
11	LG512D.07-001	Flange	法兰	1	
12	KW2337B22	Air filter	空气滤清器	1	
13	CDM512D.07.03	Connecting pipe	连接管	1	
14	JB/T8870	Hoop	喉箍	1	
15	LG512D.07.06	Filter bracket (general)	空滤器支架(通用型)	1	
16	GB/T5783	Bolt M10x25	螺栓 M10x25	2	
17	LG512D.07-003 (151070017A)	Inner air pipe	进气管	1	
18	LG512D.07III.01	Radiator	散热器装配	1	



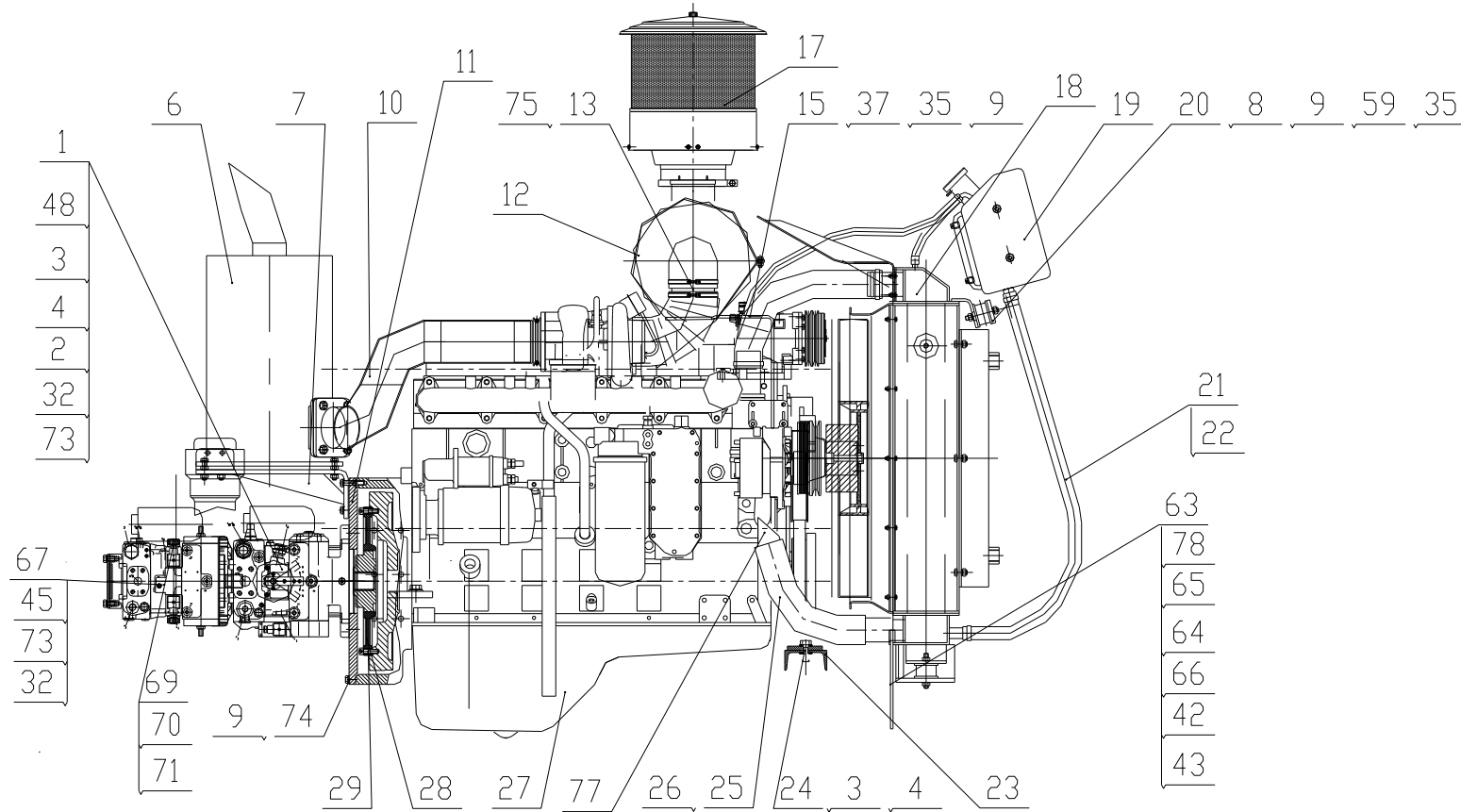
Fig.07		Engine system I (general) 发动机连接 一 (普通型)			Remarks
Item	当前 Current No.	English Description	Chinese Description	Qty	先前 Used No.
19	LG512D.07-004	Water tank	副水箱	1	
20	LG512D.07-015	Connecting board	水箱连板	2	
21	LG520D.07-014	Water pipe	注水管	1	
22	JB/T8870	Hoop d44(32~44)	喉箍 d44(32~44)	2	
23	LG520D.07-020	Steel100x50x5	槽钢100x50x5	1	
24	GB/T5783	Bolt M12x40	螺栓 M12x40	10	
25	LG512D.07-005	Water pipe	进水管	1	
26	JB/T8870	Hoop d80(60~80)	喉箍 d80(60~80)	2	
27	SO117146BT5.9-C150	Diesel engine	柴油机	1	
28	BOWEXT65-10(08072102-0)	Coupling	联轴器	1	
29	GB/T70.1	Screw M10x35	螺钉 M10x35	8	
30	GB/T5783	Bolt M10x45	螺栓 M10x45	8	
31	GB/T5783	Bolt M16x40	螺栓 M16x40	2	
32	GB/T97.1	Washer 16	垫圈16	10	
33	LG520D.07.05	Clamp assembly	紧固夹总成	2	
34	CBTCX-F425-ALφ	Steering pump	转向泵	1	
35	GB/T97.1	Washer 10	垫圈10	23	
36	LG520D.07-018	Adjusting plate	调节板	1	

Fig.07		Engine system I (general) 发动机连接 一 (普通型)			Remarks
Item	当前 Current No.	English Description	Chinese Description	Qty	先前 Used No.
37	GB/T5783	Bolt M10×30	螺栓 M10×30	2	
38	LG520D.07-027	Fuel return pipe	燃油回油管	1	
39	LG520A.80.04.30-001	Baffle ring	挡圈	1	
40	LG520D.07-023	Support plate	支板	1	
41	DX150D00-034-01	Fuel sediment cup	燃油沉淀杯	1	
42	GB/T6170	Nut M8	螺母 M8	4	
43	GB/T93	Washer 8	垫圈8	9	
44	LG512D.07-013	Fuel hose	燃油管	1	
45	GB/T5783	Bolt M16×50	螺栓 M16×50	6	
46	LG520D.07-025	Fuel inlet pipe	燃油进油管	1	
47	LG512D.07.05	Engine support weldment	发动机支脚焊合	2	
48	GB/T5783	Bolt M12×35	螺栓 M12×35	8	
49	700M-14	Link bolt M14×1.5	铰接螺栓 M14×1.5	2	
50	JB/T982-1977	Bonded washer 14	组合垫圈14	4	
51	GB/T5782	Bolt M10×70	螺栓 M10×70	2	
52	LG520D.07-006	Spacer pipe	垫管	2	
53	LG520D.07-007	Vent pipe	透气管	1	
54	JB/T8870	Hoop (Φ13-19)	卡箍(Φ13-19)	4	

Fig.07		Engine system I (general) 发动机连接 一 (普通型)			Remarks
Item	当前 Current No.	English Description	Chinese Description	Qty	先前 Used No.
55	LG520D.07-008	Vent pipe	透气管	1	
56	LG512D.07-006(151070019)	Water outlet pipe	出水管	1	
57	LG512D.07-009	Exhaust pipe	排气管	1	
58	LG512D.07-016	Seal washer	密封垫	1	
59	GB/T6170	Nut M10	螺母 M10	13	
60	GB/T5782	Bolt M10×55	螺栓 M10×55	1	
61	PLF-C110X10P(512DD)	Hydraulic oil filter	液压油过滤器	1	
62	LG512D.07-011	Link plate	连板	1	
63	LG512D.07-017	Baffle wind plate	挡风板	1	
64	LG520D.07-030	Baffle wind rubber plate	挡风胶板	1	
65	GB/T97.1	Washer 8	垫圈8	5	
66	GB/T5783	Bolt M8×25	螺栓 M8×25	7	
67	A4VG56EZ2DM1/32R-NSC02F003FH	Vibration pump	振动泵	1	
68	GK15-5.0Y11	Air condition assembly	空调总成	1	
69	DT06-2S	Shell	外壳	5	
70	W2S	Baffle shim	挡片	5	
71	1062-16-0122	Terminal	端子	10	

Fig.07		Engine system I (general) 发动机连接 一 (普通型)			Remarks
Item	当前 Current No.	English Description	Chinese Description	Qty	先前 Used No.
72	GB/T3452.1	O-ring 80×1.5	O 形圈80×1.5	1	
73	GB/T93	Washer 16	垫圈16	10	
74	GB/T5783	Bolt M10 ×40	螺栓 M10×40	12	
75	TBH87	T-type hoop 80-87	T 型卡箍80-87	2	
76	JB/T8870	Hoop d70(50-70)	喉箍 d70(50~70)	2	
77	LG816.02.02-007	Transition joint	过渡接头	1	
78	GB/T5783	Bolt M8×20	螺栓 M8×20	2	

## VIII. Engine system II (plateau)



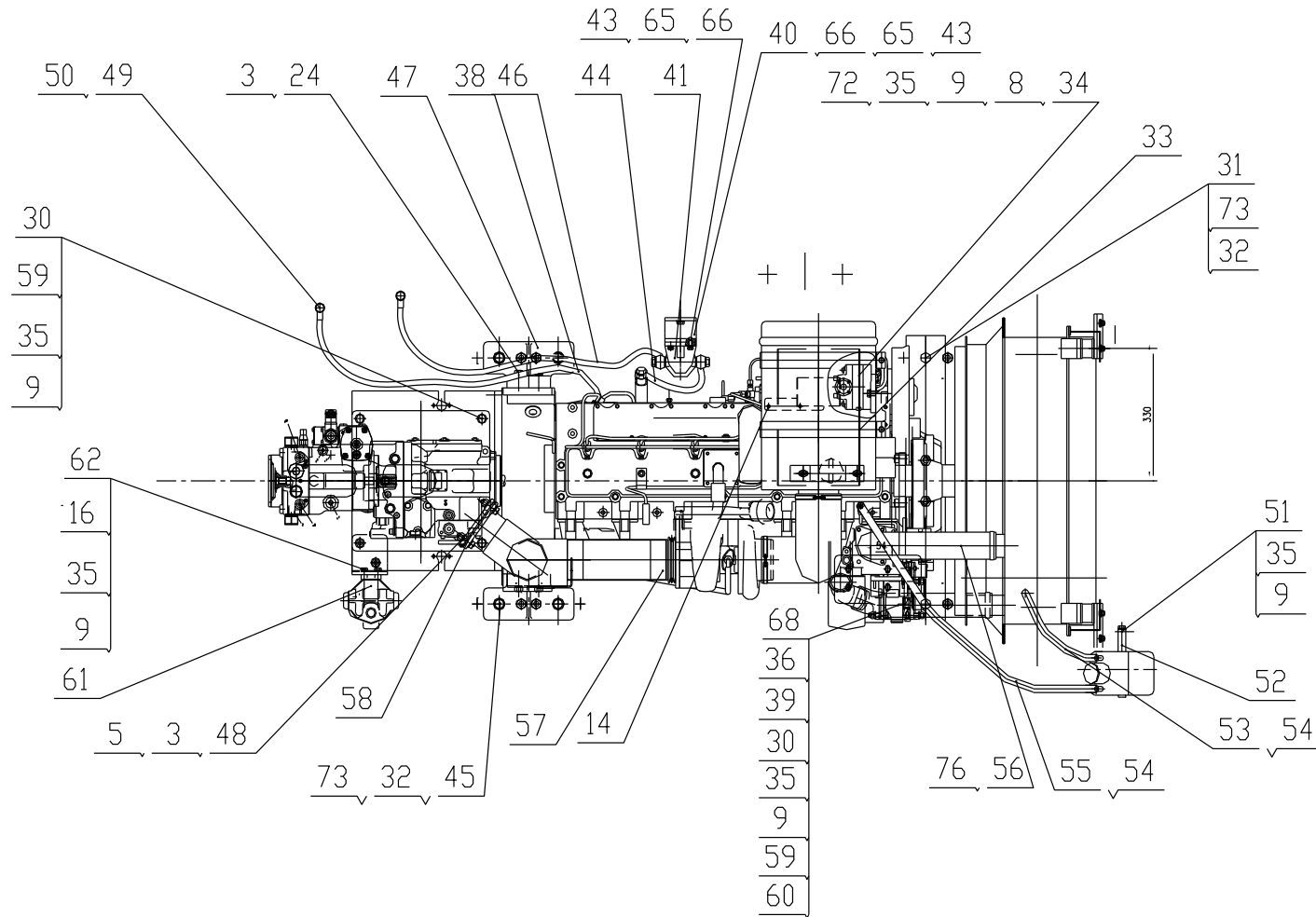


Fig.08		Engine system II (plateau) 发动机连接 二 (高原型)			Remarks
Item	当前 Current No.	English Description	Chinese Description	Qty	先前 Used No.
1	A4VG71HWDL1/32R-NAF02F071D-S	Drive pump	驱动泵	1	
2	GB/T5783	Bolt M16x45	螺栓 M16x45	2	
3	GB/T93	Washer 12	垫圈12	18	
4	GB/T97.1	Washer 12	垫圈12	6	
5	GB/T6170	Nut M12	螺母 M12	7	
6	LG512D.07.01	Mufler	消声器	1	
7	LG512D.07.02	Mufler bracket	消声器支架	1	
8	GB/T5783	Bolt M10x35	螺栓 M10x35	4	
9	GB/T93	Washer 10	垫圈10	33	
10	LG512D.07.03	Exhaust pipe assembly	排气管装配	1	
11	LG512D.07-001	Flange	法兰	1	
12	KW2337B22	Air filter	空气滤清器	1	
13	CDM512D.07.03	Connecting pipe	连接管	1	
14	CDM512D.07.01	Support weldment	支座焊合	1	
15	CDM512D.07.02	Filter bracket(plateau)	空滤器支架(高原型)	1	
16	GB/T5783	Bolt M10x25	螺栓 M10x25	2	
17	M0919	Air prefilter	空气预滤器总成 M0919	1	
18	CDM512D.07IV.01	Radiator	散热器装配	1	

Fig.08		Engine system II (plateau) 发动机连接 二 (高原型)			Remarks
Item	当前 Current No.	English Description	Chinese Description	Qty	先前 Used No.
19	CDM512D.07-003	Water tank	副水箱	1	
20	LG512D.07-015	Connecting board	水箱连板	2	
21	LG520D.07-014	Water pipe	注水管	1	
22	JB/T8870	Hoop d44(32~44)	喉箍 d44(32~44)	2	
23	LG520D.07-020	Steel 100x50x5	槽钢100x50x5	1	
24	GB/T5783	Bolt M12x40	螺栓 M12x40	10	
25	LG512D.07-005	Water pipe	进水管	1	
26	JB/T8870	Hoop d80(60~80)	喉箍 d80(60~80)	2	
27	SO117146BT5.9-C150	Diesel engine	柴油机	1	
28	BOWEXT65-10(08072102-0)	Coupling	联轴器	1	
29	GB/T70.1	Screw M10x35	螺钉 M10x35	8	
30	GB/T5783	Bolt M10x45	螺栓 M10x45	8	
31	GB/T5783	Bolt M16x40	螺栓 M16x40	2	
32	GB/T97.1	Washer 16	垫圈16	10	
33	LG520D.07.05	Clamp assembly	紧固夹总成	2	
34	CBTCX-F425-ALφ	Steering pump	转向泵	1	
35	GB/T97.1	Washer 10	垫圈10	23	
36	LG520D.07-018	Adjusting plate	调节板	1	



Fig.08		Engine system II (plateau) 发动机连接 二 (高原型)			Remarks
Item	当前 Current No.	English Description	Chinese Description	Qty	先前 Used No.
37	GB/T5783	Bolt M10×30	螺栓 M10×30	2	
38	LG520D.07-027	Fuel return pipe	燃油回油管	1	
39	LG520A.80.04.30-001	Baffle ring	挡圈	1	
40	LG520D.07-023	Support plate	支板	1	
41	DX150D00-034-01	Fuel sediment cup	燃油沉淀杯	1	
42	GB/T6170	Nut M8	螺母 M8	4	
43	GB/T93	Washer 8	垫圈8	9	
44	CDM512D.07-002	Fuel hose	燃油管	1	
45	GB/T5783	Bolt M16×50	螺栓 M16×50	6	
46	LG520D.07-025	Fuel inlet pipe	燃油进油管	1	
47	LG512D.07.05	Engine support weldment	发动机支脚焊合	2	
48	GB/T5783	Bolt M12×35	螺栓 M12×35	8	
49	700M-14	Link bolt M14×1.5	铰接螺栓 M14×1.5	2	
50	JB/T982-1977	Bonded washer 14	组合垫圈14	4	
51	GB/T5782	Bolt M10×70	螺栓 M10×70	2	
52	LG520D.07-006	Spacer pipe	垫管	2	
53	LG520D.07-007	Vent pipe	透气管	1	
54	JB/T8870	Hoop (Φ 13-19)	卡箍(Φ 13-19)	4	

Fig.08		Engine system II (plateau) 发动机连接 二 (高原型)			Remarks
Item	当前 Current No.	English Description	Chinese Description	Qty	先前 Used No.
55	LG520D.07-008	Vent pipe	透气管	1	
56	LG512D.07-006(151070019)	Water outlet pipe	出水管	1	
57	LG512D.07-009	Exhaust pipe	排气管	1	
58	LG512D.07-016	Seal washer	密封垫	1	
59	GB/T6170	Nut M10	螺母 M10	13	
60	GB/T5782	Bolt M10×55	螺栓 M10×55	1	
61	PLF-C110X10P(512DD)	Hydraulic oil filter	液压油过滤器	1	
62	LG512D.07-011	Link plate	连板	1	
63	LG512D.07-017	Wind board	挡风板	1	
64	LG520D.07-030	Rubber wind board	挡风胶板	1	
65	GB/T97.1	Washer 8	垫圈8	5	
66	GB/T5783	Bolt M8×25	螺栓 M8×25	7	
67	A4VG56EZ2DM1/32R-NSC02F003FH	Vibration pump	振动泵	1	
68	GK15-5.0Y11	Air condition assembly	空调总成	1	
69	DT06-2S	Shell	外壳	5	
70	W2S	Baffle shim	挡片	5	
71	1062-16-0122	Terminal	端子	10	

Fig.08		Engine system II (plateau) 发动机连接 二 (高原型)			Remarks
Item	当前 Current No.	English Description	Chinese Description	Qty	先前 Used No.
72	GB/T3452.1	O-ring 80×1.5	O 形圈80×1.5	1	
73	GB/T93	Washer 16	垫圈16	10	
74	GB/T5783	Bolt M10 ×40	螺栓 M10×40	12	
75	TBH87	T-type hoop 80-87	T 型卡箍80-87	2	
76	JB/T8870	Hoop d70(50-70)	喉箍 d70(50~70)	2	
77	LG816.02.02-007	Transition joint	过渡接头	1	
78	GB/T5783	Bolt M8×20	螺栓 M8×20	2	

## IX. Control system

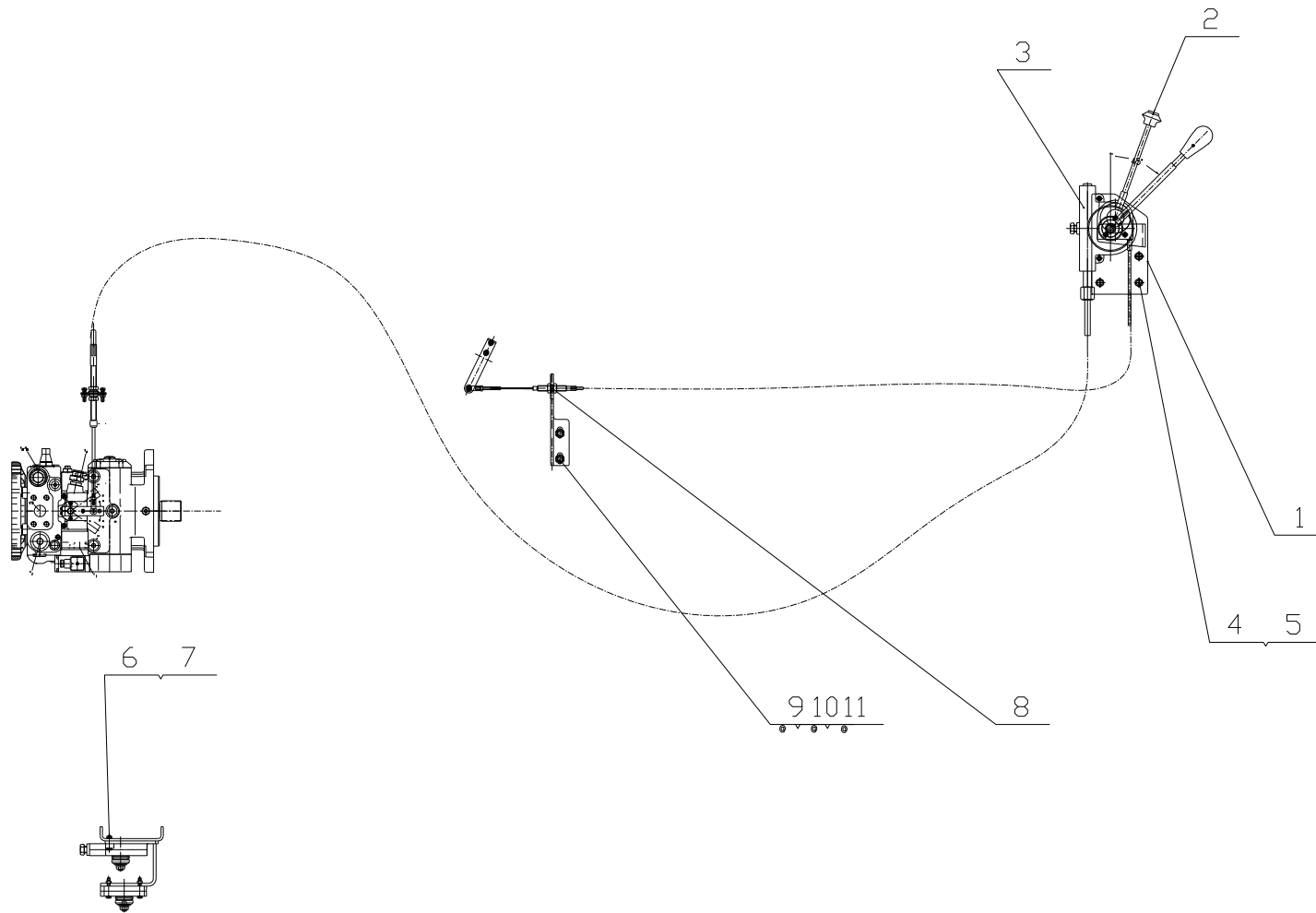


Fig.09		Control system 操纵系统			Remarks
Item	当前 Current No.	English Description	Chinese Description	Qty	先前 Used No.
1	LG520D.16.01	Connecting bracket	连接架焊合	1	
2	LG520D.16.03	Throttle controller assembly	油门控制器总成	1	
3	LG520D.16.04	Direction controller	倒顺控制器	1	
4	GB/T5783	Bolt M10×25	螺栓 M10×25	3	
5	GB/T93	Washer 10	垫圈 10	3	
6	GB/T5783	Bolt M6×25	螺栓 M6×25	2	
7	GB/T93	Washer 6	垫圈 6	4	
8	LG512D.16-001	Accelerator support	油门支撑	1	
9	GB/T5783	Bolt M12×25	螺栓 M12×25	2	
10	GB/T97.1	Washer 12	垫圈 12	2	
11	GB/T93	Washer 12	垫圈 12	2	

**X. Hydraulic oil tank assembly**

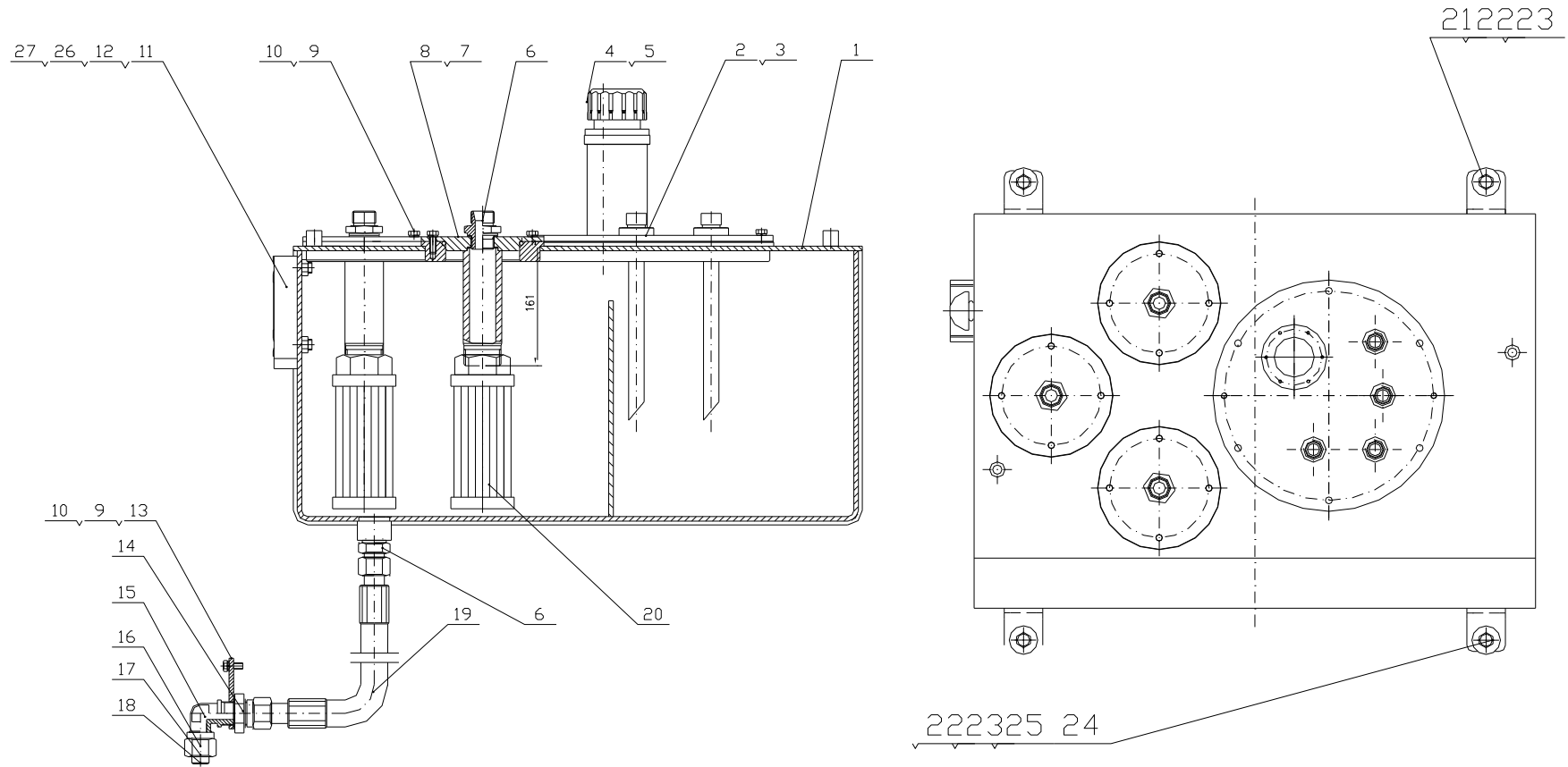


Fig.10		Hydraulic oil tank assembly 液压油箱总成			Remarks
Item	当前 Current No.	English Description	Chinese Description	Qty	先前 Used No.
1	LG520D.13.01	Hydraulic oil tank weldment	液压油箱焊接	1	
2	LG512D.13III.01	Cover board weldment	盖板焊接	1	
3	GB/T3452.1	O-ring 243×5.3	O 形圈 243×5.3	1	
4	GB/T818	Screw M4×14	螺钉 M4×14	4	
5	PAFZ-0.02-0.55-20.F	Precompression air filter	预压式空滤器	1	
6	1CH30	Connector	接头	4	
7	GB/T3452.1	O-ring 95×5.3	O 形圈 95×5.3	3	
8	LG520D.13.03	Oil suction cover weldment	吸油盖焊接	3	
9	GB/T5783	Bolt M8×20	螺栓 M8×20	20	
10	GB/T93	Washer 8	垫圈 8	20	
11	YWZ-100T	Liquid level gauge	液位计	1	
12	YD	Liquid level valve	液位单向阀	2	
13	LG520D.13-002	Fixing board	固定板	1	
14	GB/T3763	Nut M30×2	螺母 M30×2	1	
15	GB/T3749.2	Connector G22(M30×2)	接头体 G22(M30×2)	1	
16	GB/T3764	Sleeve 22	卡套 22	1	
17	GB/T3759	Nut G22(M20×2)	螺母 G22(M30×2)	1	
18	LG520D.13-001	Plug	塞头	1	

Fig.10		Hydraulic oil tank assembly 液压油箱总成			Remarks
Item	当前 Current No.	English Description	Chinese Description	Qty	先前 Used No.
19	20411-30*1W2*500	Hose assembly	胶管总成	1	
20	WU-160*80-JXU-160*80-J	Oil suction filter	吸油过滤器	3	
21	GB/T5783	Bolt M12×25	螺栓 M12×25	2	
22	GB/T93	Washer 12	垫圈 12	4	
23	GB/T96.1	Washer 12	垫圈 12	4	
24	GB/T5783	Bolt M12×40	螺栓 M12×40	2	
25	GB/T6170	Nut M12	螺母 M12	2	
26	JB/T982	Bonded washer 22	组合垫圈 22	2	
27	L8C-22	Metric lock nut	公制锁母	2	



**XI. Articulated bracket assembly**

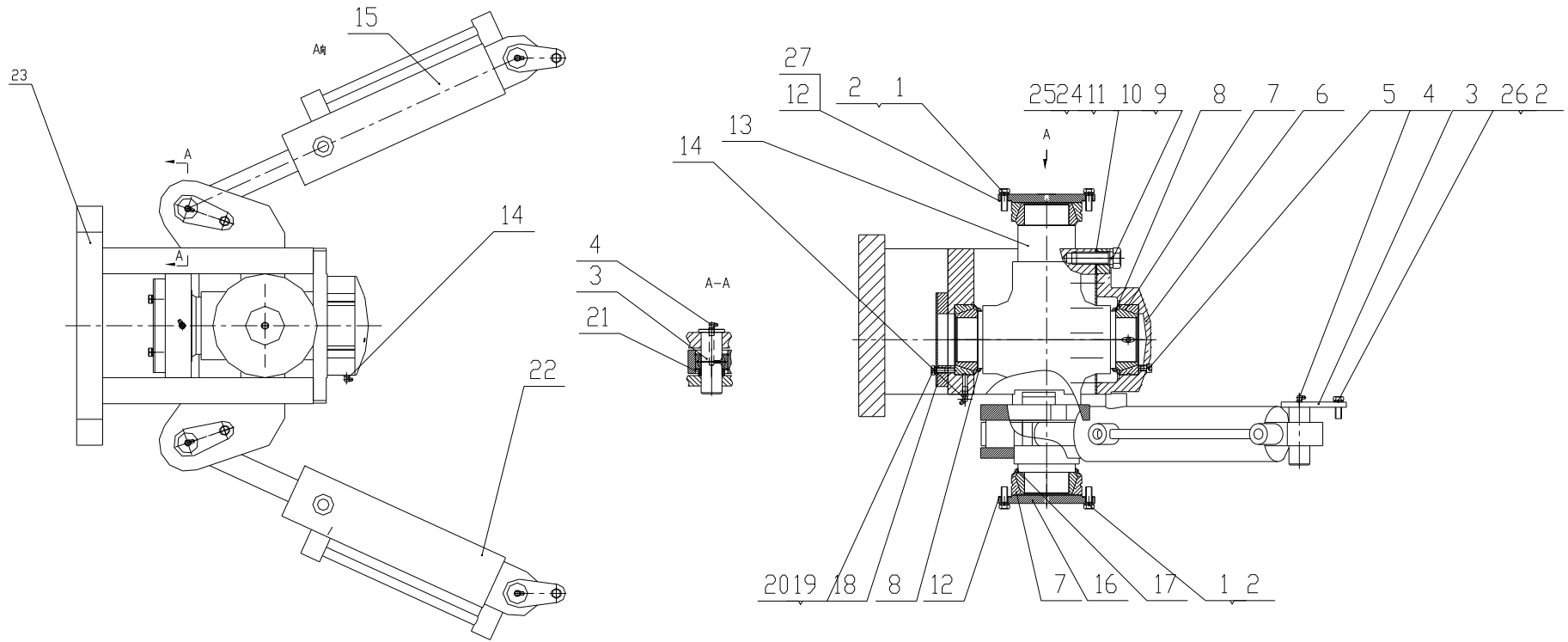


Fig.11		Articulated bracket assembly 铰接架总成			Remarks
Item	当前 Current No.	English Description	Chinese Description	Qty	先前 Used No.
1	GB/T5783	Bolt M12×35	螺栓 M12×35	12	
2	GB/T93	Washer 12	垫圈 12	16	
3	LG520D.18.03	Rear pin	后转销	4	
4	JB/T9740.2	Grease cup 90° M10×1	油杯 90° M10×1	4	
5	GB/T70.1	Screw M12×16	螺钉 M12×16	3	
6	LG520A.30-004	Artuculated bearing cover	铰接轴承盖	1	
7	GAC85S/K	Bearing	轴承	4	
8	LG520A.31-009	Front and rear dust ring	前后防尘圈	2	
9	GB/T5782	Bolt M24×70	螺栓 M24×70	12	
10	GB/T93	Washer 24	垫圈 24	12	
11	LG520A.30-003	Gasket	垫片	1	
12	LG520A.31-008	Adjusting shim	调整垫	10	
13	LG520D.18.02	Spider weldment	十字轴焊合	1	
14	JB/T7940.2	Grease cup 45° M10×1	油杯 45° M10×1	2	
15	LG520D.18.05	Right steering cylinder	右转向油缸	1	
16	LG520A6.18-003	Bearing cover	轴承上下盖	2	
17	LG520A.31-010	Lower dust ring	下防尘圈	1	
18	LG520D.18-003	Cover board	盖板	1	

Fig.11		Articulated bracket assembly 铰接架总成			Remarks
Item	当前 Current No.	English Description	Chinese Description	Qty	先前 Used No.
19	GB/T5783	Bolt M10×16	螺栓 M10×16	3	
20	GB/T93	Washer 10	垫圈 10	3	
21	LG520D.18-002	Sleeve	隔套	4	
22	LG520D.18.04	Cylinder Φ90/Φ45	油缸 Φ90/Φ45	1	
23	LG512D.18.01	Articulated bracket seat	铰接架座焊合	1	
24	LG520A.30-014	Gasket	垫片	2	
25	LG520A.30-015	Gasket	垫片	2	
26	GB/T5783	Bolt M12×20	螺栓 M12×20	4	
27	LG520A.31-018	Adjusting shim	调整垫	7	

**XII. Hydraulic vibration system**

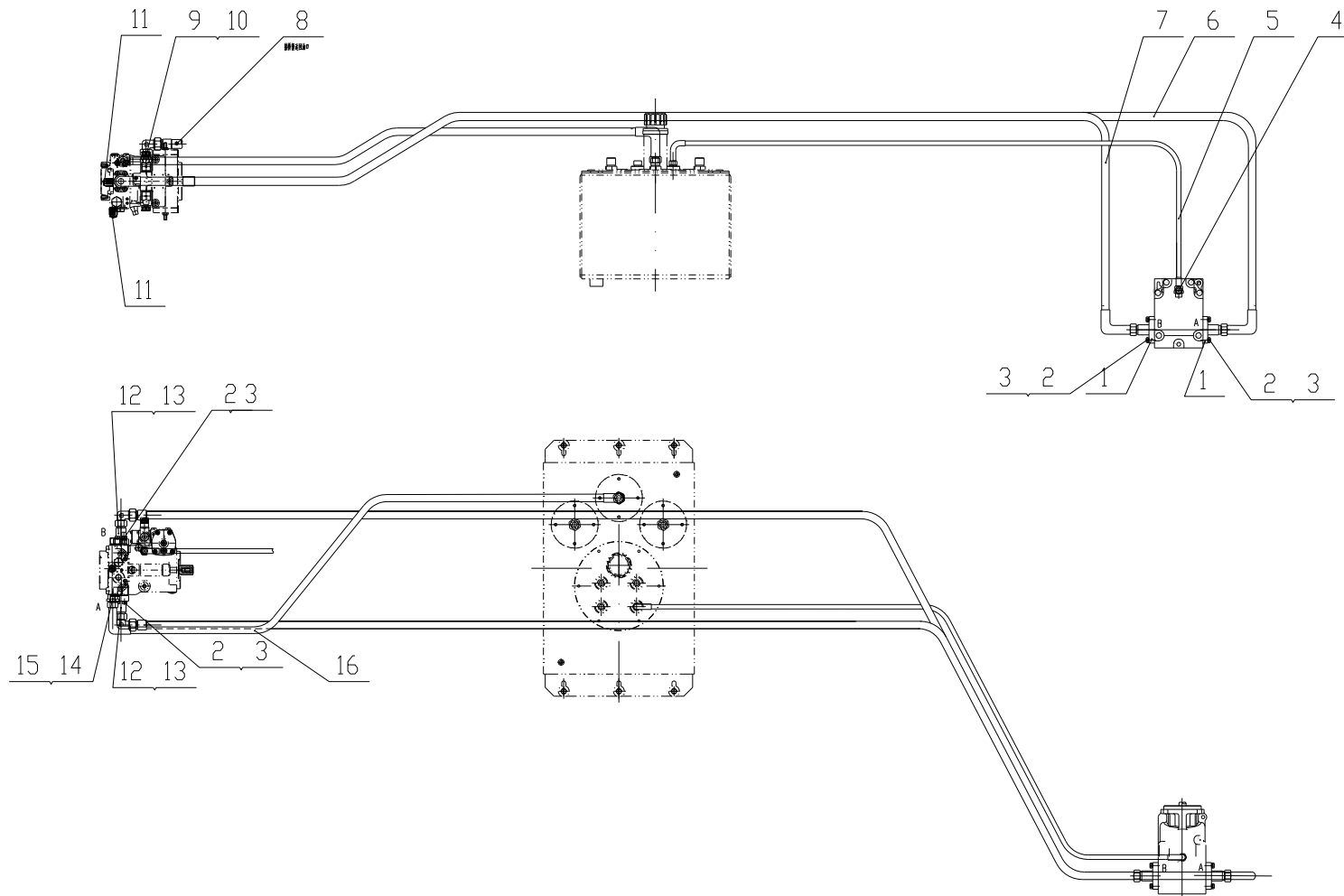
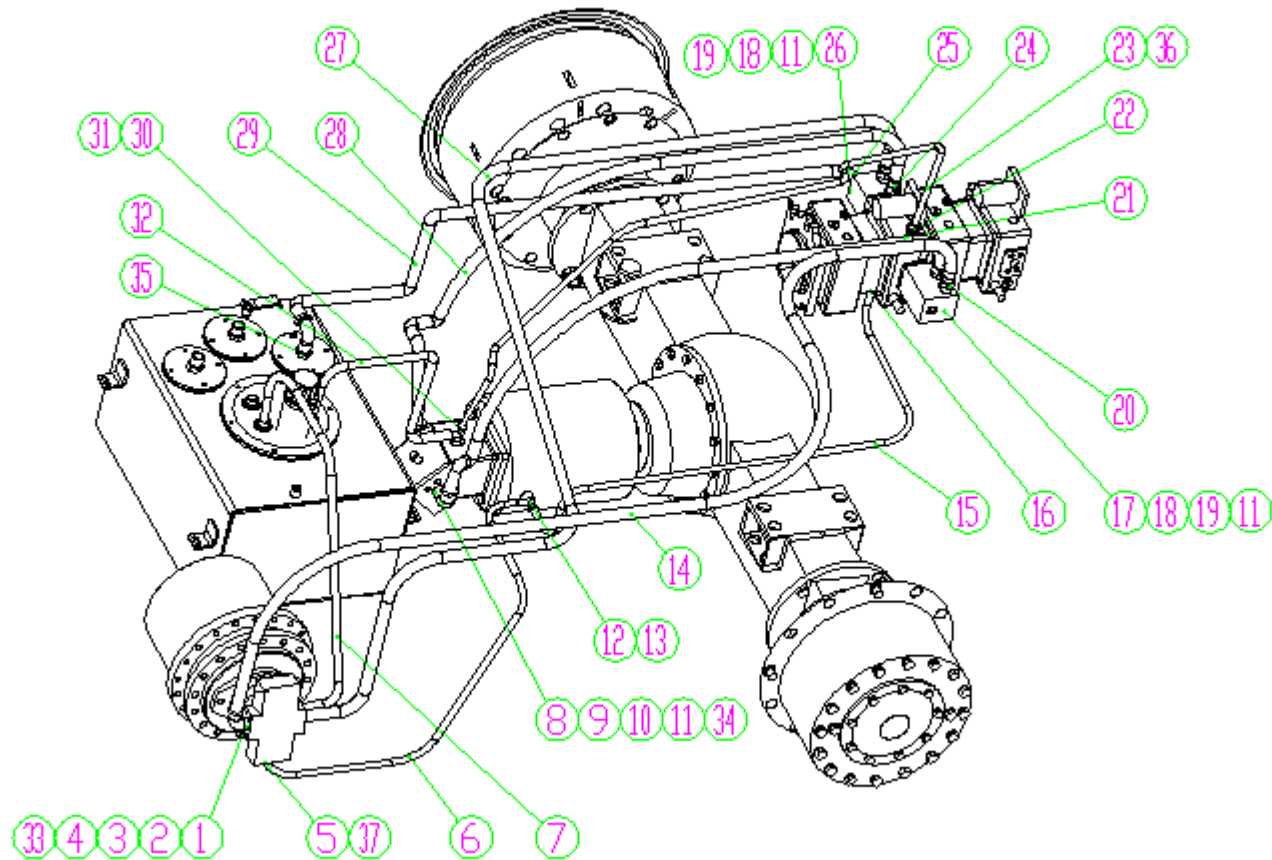


Fig.12		Hydraulic vibration system 液压振动系统			Remarks
Item	当前 Current No.	English Description	Chinese Description	Qty	先前 Used No.
1	1DFS-30-12W	SAE flange	SAE 法兰	2	
2	GB/T5783	Bolt M10×35	螺栓 M10×35	16	
3	GB/T93	Washer 10	垫圈 10	16	
4	1CH-26-18	Connector	接头	1	
5	LG520D.11-001	Flange connector	法兰接头	2	
6	SMK20-M14*1.5/103591505	Pressure joint	测压接头	3	
7	1CH-22	Connector	接头	1	
8	1CH-30-33	Connector	接头	1	
9	20411-22/20441-22*1W10*2700+RC	Hose assembly	胶管总成	1	
10	2C9-22	Connector	接头	1	
11	20411-30T/20491-30T*1W12*2700+RC	Hose assembly	胶管总成	1	
12	2C9-30	Connector	接头	1	
13	20411-26T/20491-26T*1W08*3300+RC	Hose from vibration pump port T to oil tank	振动马达 T 口到油箱软管	1	
14	20512-30/20592-30T*4SC12*6400+RC	Hose assembly	胶管总成	1	
15	20512-30T/20592-30T*4SC12*5900+RC	Hose assembly	胶管总成	1	
16	2D9-30	Connector	接头	2	

### XIII. Hydraulic drive system



**Hydraulic drive system (filter connection)**

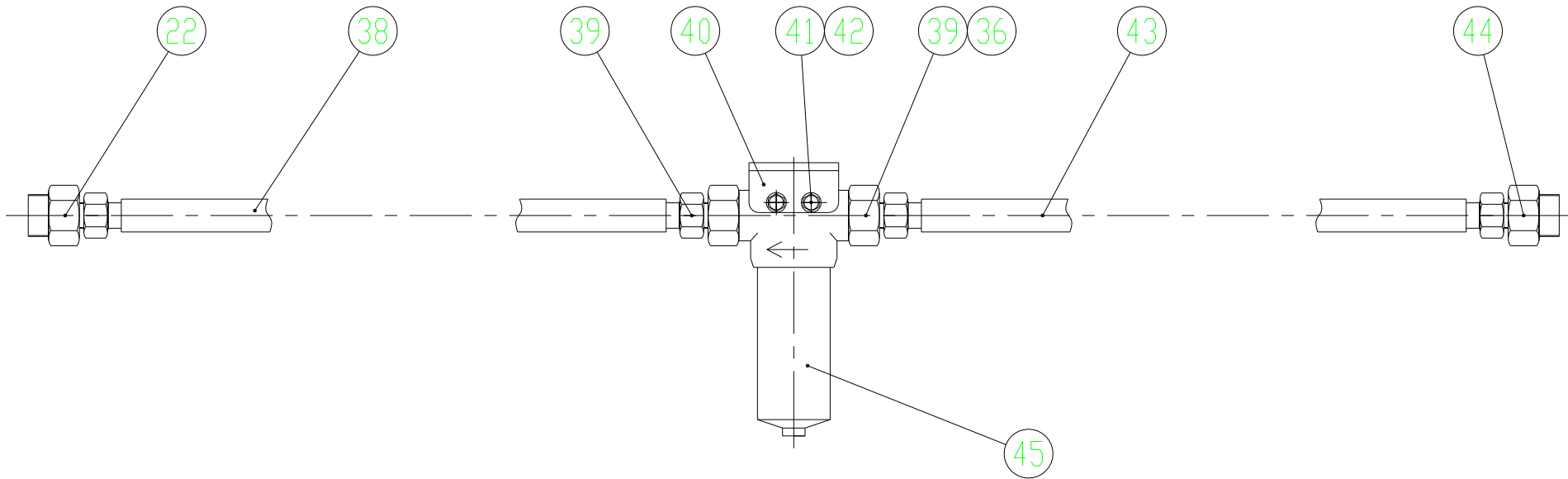


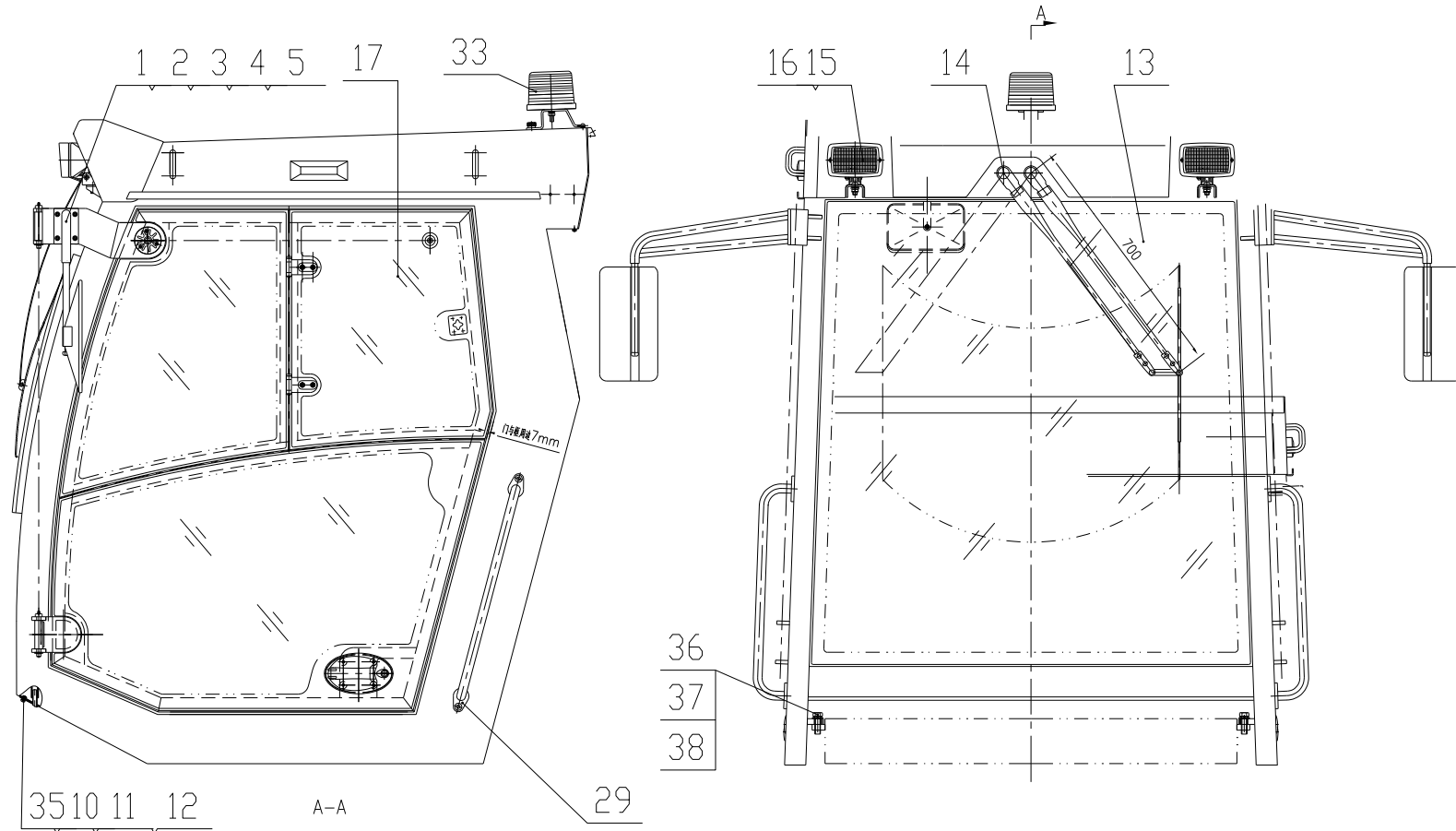
Fig.13		Hydraulic drive system 液压驱动系统			Remarks
Item	当前 Current No.	English Description	Chinese Description	Qty	先前 Used No.
1	1DFS-36-12W	SAE flange	SAE 法兰	2	
2	GB3452.1	O-ring $\phi 25 \times 3.53$	O 形圈 $\phi 25 \times 3.53$	2	
3	GB/T5783	Bolt M10 $\times$ 35	螺栓 M10 $\times$ 35	8	
4	GB/T93	Washer 10	垫圈 10	8	
5	1CH-16-12L42	Connector	接头	1	
6	20491-16/20411-16*1W05*4600+RC	Brake hose from front motor reducer to rear axle	前马达减速器到后桥刹车软管	1	
7	20411-22/20491-26*1W08*3150+RC	Hose from front motor port T to oil tank	前马达 T 口到油箱软管	1	
8	1DFS-36-16W	SAE flange	SAE 法兰	2	
9	GB3452.1	O-ring $\phi 32.92 \times 3.53$	O 形密封圈 $\phi 32.92 \times 3.53$	2	
10	GB/T5783	Bolt M12 $\times$ 40	螺栓 M12 $\times$ 40	8	
11	GB/T93	Washer 12	垫圈 12	16	
12	1CH-16-18	Connector	接头	1	
13	CC-16	T-connector	三通接头	1	
14	20592-30/20512-36*4SH12*5500+RC	Hose from travel pump port A to front motor port A	行走泵 A 口到前马达 A 口软管	1	
15	20411-16/20491-16*1W05*1700+RC	Hose from travel pump brake valve to rear axle brake T-connector	行走泵刹车阀口到后桥刹车三通软管	1	
16	1CH-16-14	Connector	接头	1	



Fig.13		Hydraulic drive system 液压驱动系统			Remarks
Item	当前 Current No.	English Description	Chinese Description	Qty	先前 Used No.
17	CD-36	Connector	接头	2	
18	GB3452.1	O-ring $\phi 31.5 \times 3.55$	O 形圈 $\phi 31.5 \times 3.55$	2	
19	LG520D.12-004	Bolt	螺栓	8	
20	1DH-30	Connector	接头	2	
21	20592-36/20512-36*4SH12*1950+RC	Hose from travel pump port B to dirve motor port A	行走泵 B 口到桥驱马达 A 口软管	1	
22	1CH-26	Connector	接头	2	
23	20491-26/20411-26*1W12*2200+RC	Hose from travel port T to drive motor port T	行走泵 T 口到桥驱马达 T 口三通软管	1	
24	1DH-36-30	Connector	接头	2	
25	1CH-30-42	Connector	接头	1	
26	1DFS-36-16W	SAE flange	SAE 法兰	2	
27	20592-36/20512-36*4SH12*6000+RC	Hose from travel pump port B to front motor port B	行走泵 B 口到前马达 B 口软管	1	
28	20592-36/20512-36*4SH12*1950+RC	Hose from travel pump port A to drive motor port B	行走泵 A 口到桥驱马达 B 口软管	1	
29	20491-30/20411-30*1W12*2700+RC	Hose from travel port S to oil tank	行走泵 S 口到油箱软管	1	
30	1CH-26-18	Connector	接头	1	
31	CC-26	T-connector	三通接头	1	
32	20411-26/20491-26*1W12*1400+RC	Hose assembly	桥驱马达 T 口三通到油箱回油口软管	1	

Fig.13		Hydraulic drive system 液压驱动系统			Remarks
Item	当前 Current No.	English Description	Chinese Description	Qty	先前 Used No.
33	2D9-36	Connector	接头	2	
34	2D9-36	Connector	接头	2	
35	2C9-30	Connector	接头	1	
36	2C9-26	Connector	接头	4	
37	2C9-16	Connector	接头	2	
38	20411-26/20491-26*2W12*650+RC	Hose from filter outlet port to travel pump port Fa	过滤器出油口到行走泵 Fa 口胶管	1	
39	1CH-26-42	Connector	接头	2	
40	LG512D.07-011	Connecting plate	连板	1	
41	GB/T5783	Bolt M10×25	螺栓 M10×25	2	
42	GB/T97.1	Washer 10	垫圈 10	2	
43	20411-26*2W12*400+RC	Hose from travel port Fe to filter inlet port	行走泵 Fe 口到过滤器进油口胶管	1	
44	1CH-26-22	Connector	接头	1	
45	PLF-C110X10P	Filter	过滤器	1	

## XIV. Cab assembly I



**XIV. Cab assembly II**

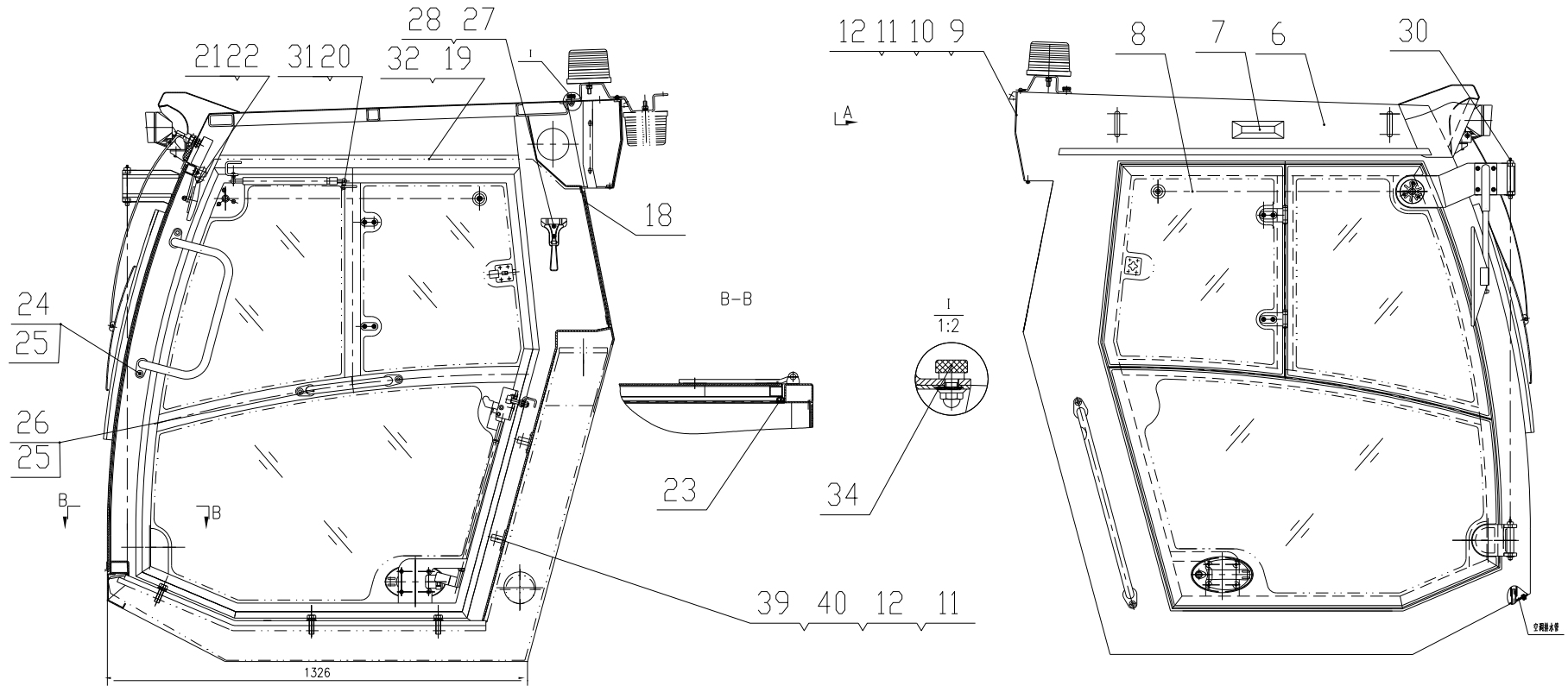


Fig.14		Cab assembly 驾驶室总成			Remarks
Item	当前 Current No.	English Description	Chinese Description	Qty	先前 Used No.
1	LG520A6.21.19	Rearview support weldment	倒车镜支架焊接	2	
2	GB/T5783	Bolt M8×30	螺栓 M8×30	8	
3	GB/T93	Washer 8	垫圈 8	8	
4	GB/T97.1	Washer 8	垫圈 8	8	
5	ZQP-142	Rearview	倒车镜	2	
6	LG512D.21III.01	Cab frame weldment	驾驶室框架焊接	1	
7	LG512DDA.24.12	Steering lights	转向灯	2	
8	LG520A6.21.03	Right door assembly	右侧门总成	1	
9	LG520A61.21.03	Netting protector weldment	网罩焊接	1	
10	GB/T818	Screw M6×16	螺钉 M6×16	6	
11	GB/T93	Washer 6	垫圈 6	10	
12	GB/T97.1	Washer 6	垫圈 6	10	
13	LG520A6.21-009	Front window glass (green)	前窗玻璃 (绿色)	1	
14	LG520A6.21.05	Wiper	雨刮器	1	
15	LG520A6.21.06	Headlight	前大灯 WD150×90-2	2	
16	LG30F.12-017	Wiring harness bushing	线束护线套	9	
17	LG520A6.21.09	Left door assembly	左侧门总成	1	
18	LG520A6.21-010	Rear window glass (green)	后窗玻璃 (绿色)	1	

Fig.14		Cab assembly 驾驶室总成			Remarks
Item	当前 Current No.	English Description	Chinese Description	Qty	先前 Used No.
19	LG523A3.21.12	Ceiling trim	顶棚内饰	1	
20	LG520A6.21.13	Air spring	气弹簧	2	
21	LG520A61.21-001	Rearview support	后视镜支架	1	
22	LG520A61.21.02	Indoor mirror	内视镜	1	
23	LG520A6.21-007	Block glue	门框胶条 S617	2	
24	LG520A6.21.20	Safety handle weldment	安全拉手焊接	2	
25	GB/T819.1	Screw M8×20	螺钉 M8×20	12	
26	LG520A6.21.18	Door handle weldment	门拉手焊接	2	
27	LG520A6.21.17	Safety hammer	安全锤	1	
28	GB/T845	Tapping screw ST4.8×16	自攻螺钉 ST4.8×16	2	
29	LG520A6.21.22	Rear handle of left door	左门后拉手焊接	2	
30	JB/T7940.1	Grease cup M6	油杯 M6	4	
31	GB/T96.1	Washer 8	垫圈 8	2	
32	LG520A61.21-003	Rivet for interior	内饰用铆钉	30	
33	LG520A6.21.08	Warning light	警示灯	1	
34	LG520A6.21-008	Bolt for warning light	警示灯固定螺栓	1	
35	LG520A61.21.04	Drain connector weldment	排水管接头焊接	2	
36	GB/T5783	Bolt M16×50	螺栓 M16×50	6	

Fig.14		Cab assembly 驾驶室总成			Remarks
Item	当前 Current No.	English Description	Chinese Description	Qty	先前 Used No.
37	GB/T93	Washer 16	垫圈 16	6	
38	GB/T97.1	Washer 16	垫圈 16	6	
39	LG520D.15-011	Rubber clamp	橡胶夹	2	
40	GB/T5783	Bolt M6×16	螺栓 M6×16	4	

**XV. Cab door assembly**

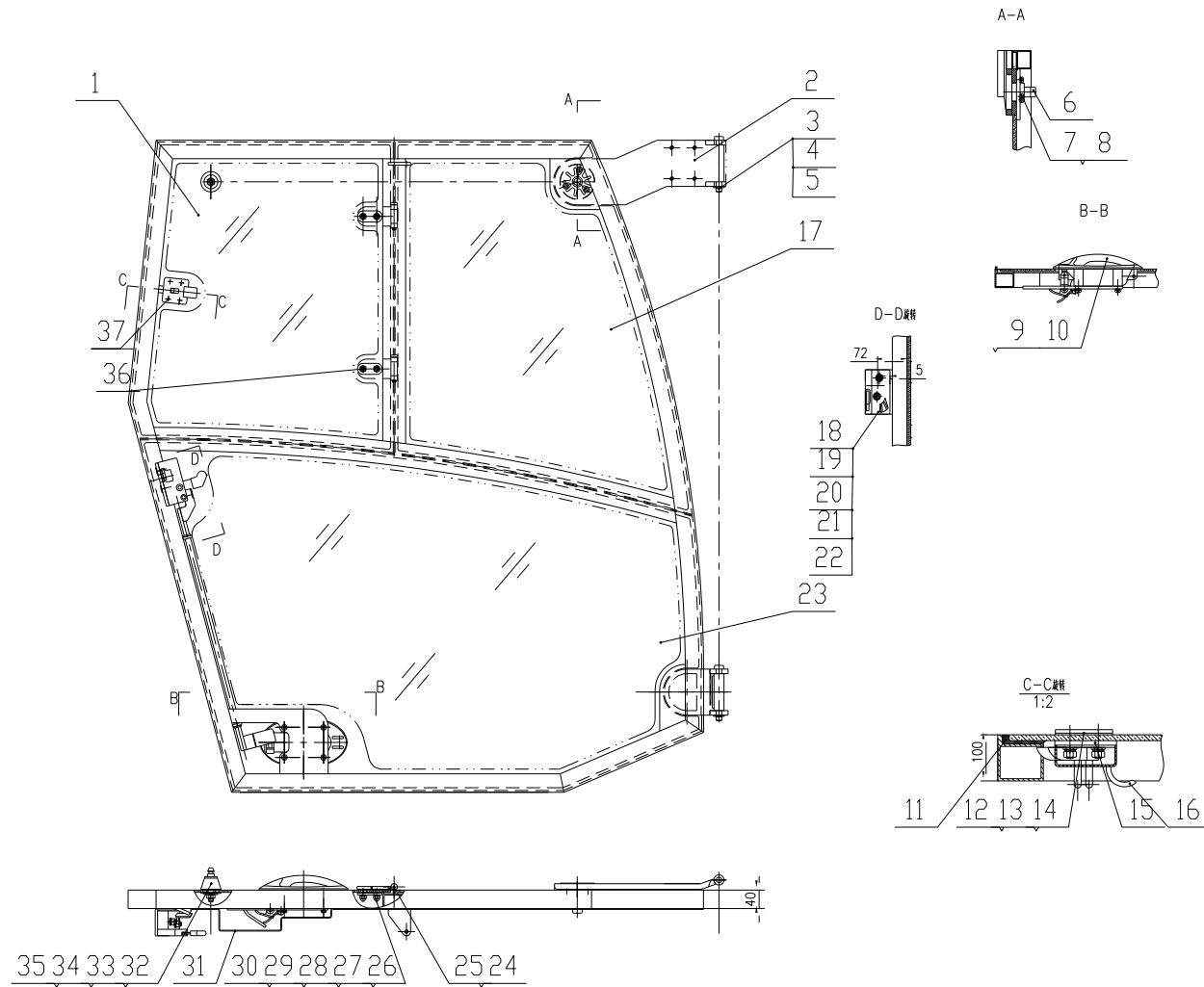


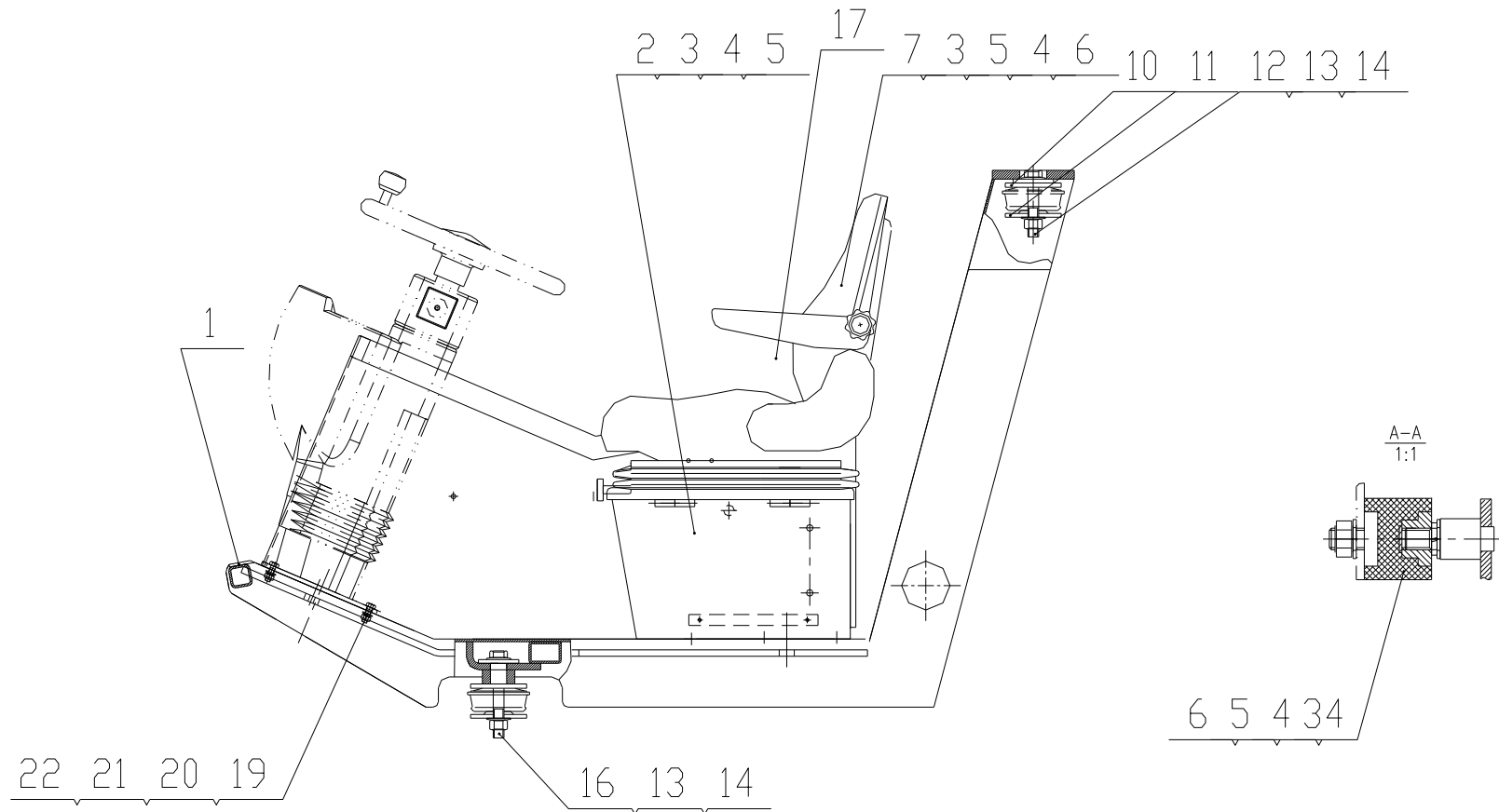


Fig.15		Cab door assembly 驾驶室门总成			Remarks
Item	当前 Current No.	English Description	Chinese Description	Qty	先前 Used No.
1	LG520A6.21.03-013	Activity glass (green)	活动玻璃 (绿色)	2	
2	LG520A6.21.09.01	Left door frame weldment	左侧门框架焊合	1	
	LG520A6.21.03.01	Right door frame weldment	右侧门框架焊合	1	
3	LG520A6.21.03-002	Door hinge pin	门合页销	4	
4	GB/T97.1	Washer 12	垫圈12	4	
5	GB/T894.1	Baffle ring 12	挡圈12	4	
6	LG520A6.21.03.02	Glass door lock seat	玻璃门锁座	2	
7	GB/T818	Screw M6×30	螺钉M6×30	14	
8	GB/T93	Washer 6	垫圈6	22	
9	GB/T97.1	Washer 6	垫圈6	22	
10	LG520A6.21.09.02	Left door lock handle	左门锁拉手	2	
	LG520A6.21.03.03	Right door lock handle	右门锁拉手	1	
11	LG520A6.21.03-003	Window block glue	窗胶条	2	
12	LG520A6.21.03.04-001	Plate	板	2	
13	LG520A6.21.03-004	Thin rubber plate	薄橡胶板	2	
14	GB/T6170	Nut M6	螺母M6	8	
15	LG520A6.21.03-005	Thick rubber plate	厚橡胶板	2	
16	LG520A6.21.03.05	Window lock	窗锁	2	

Fig.15		Cab door assembly 驾驶室门总成			Remarks
Item	当前 Current No.	English Description	Chinese Description	Qty	先前 Used No.
17	LG520A6.21.03-014	Front window glass (green)	前窗玻璃 (绿色)	2	
18	LG520A6.21.09.03	Left door lock	左门锁	2	
	LG520A6.21.03.06	Right door lock	右门锁	1	
19	GB/T819 .1	Screw M8×40	螺钉M8×40	4	
20	GB/T97.1	Washer 8	垫圈8	4	
21	GB/T93	Washer 8	垫圈8	12	
22	GB/T6170	Nut M8	螺母M8	12	
23	LG520A6.21.03-015	Lower window glass (green)	下窗玻璃 (绿色)	2	
24	LG520A6.21.03-008	Window hinge pin	窗合页销	4	
25	GB/T894.1	Washer 8	垫圈8	4	
26	LG520A6.21.03.07	Window hinge weldment	窗合页焊合	4	
27	LG520A6.21.03-009	Outer rubber blanket	外橡胶垫	4	
28	LG520A6.21.03-010	Inner rubber blanket	内橡胶垫	4	
29	LG520A6.21.03-011	Dam-board	挡板	4	
30	GB/T923	Nut M8	螺母M8	8	
31	LG520A6.21.09.04	Interior trim parts	内饰件	2	
32	LG520A6.21.03.09	Glass door lock	玻璃门锁头	2	
33	LG520A6.21.03-012	Rubber blanket	橡胶垫	4	

Fig.15		Cab door assembly 驾驶室门总成			Remarks
Item	当前 Current No.	English Description	Chinese Description	Qty	先前 Used No.
34	GB/T96.1	Washer 10	垫圈10	2	
35	GB/T6170	Nut M10	螺母M10	2	
36	GB/T819	Screw M8×25	螺钉M8×25	8	
37	GB/T819	Screw M6×30	螺钉M6×30	8	

**XVI. Operating board system**



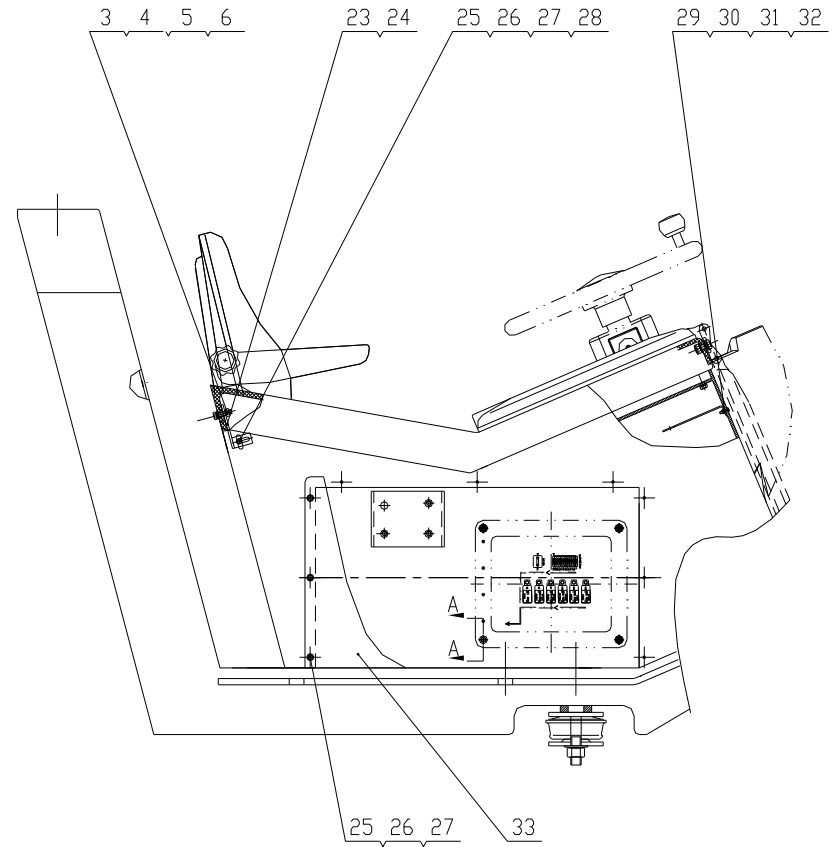
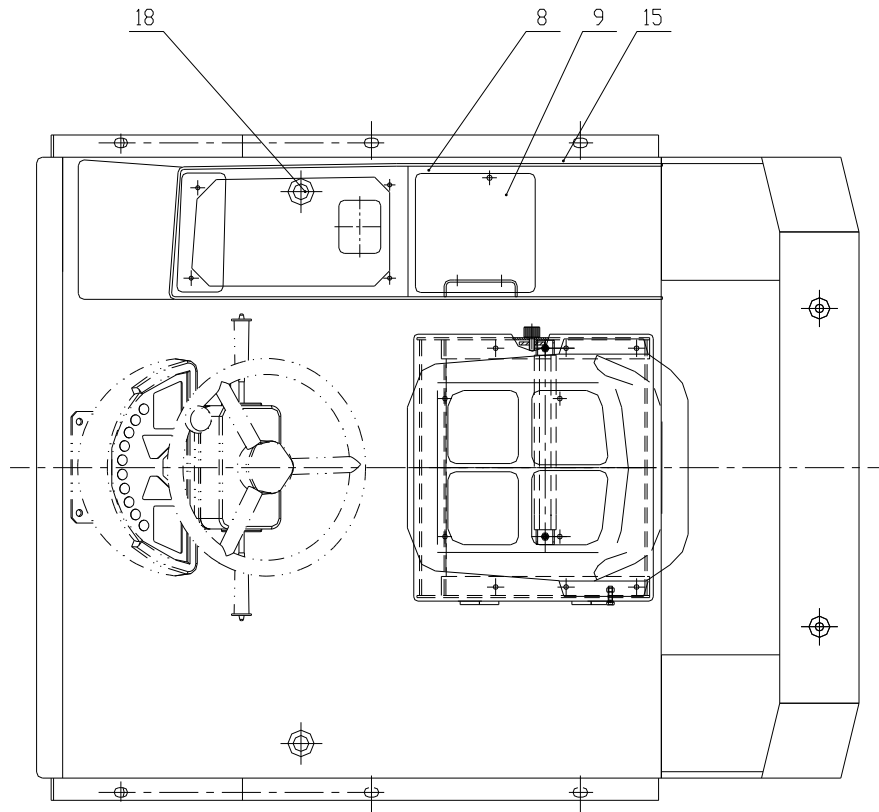


Fig.16		Operating board system 操作台系统			Remarks
Item	当前 Current No.	English Description	Chinese Description	Qty	先前 Used No.
1	LG512D.15III.01	Operating board weldment	操纵台焊合	1	
2	LG521J.23	Seat system	座椅系统	1	
3	GB/T5783	Bolt M8×25	螺栓M8×25	13	
4	GB/T93	Washer 8	垫圈8	17	
5	GB/T97.1	Washer 8	垫圈8	17	
6	GB/T6170	Nut M8	螺母M8	11	
7	SC2-6	Aero seat	航空座椅 (B、D、E)	1	
8	LG520D.15-002	Panel	面板	1	
9	LG520D.15.05	Protecting jacket assembly	护套安装总成	1	
10	LG520D.15-007	Upper padding plate	上垫板	4	
11	LG520D.15-008	Lower padding plate	下垫板	4	
12	GB/T5782	Bolt M20×130	螺栓M20×130	2	
13	GB/T6170	Nut M20	螺母M20	4	
14	DIN6796	Washer 20	垫圈20	8	
15	LG512D.15III-001	Ground mat	地垫	1	
16	GB/T5782	Bolt M20×180	螺栓M20×180	2	
17	LG520A6.15.04	Safety belt	安全带	1	
18	LG520D.05-009	Rubber cover	橡胶盖	2	

Fig.16		Operating board system 操作台系统			Remarks
Item	当前 Current No.	English Description	Chinese Description	Qty	先前 Used No.
19	GB/T5783	Bolt M12×30	螺栓M12×30	4	
20	GB/T97.1	Washer 12	垫圈12	4	
21	GB/T93	Washer 12	垫圈12	4	
22	GB/T6170	Nut M12	螺母M12	4	
23	LG512D.15III-002	Left connection plate	左连接板	1	
24	LG512D.15III-003	Right connection plate	右连接板	1	
25	GB/T5783	Bolt M6×20	螺栓M6×20	11	
26	GB/T93	Washer 6	垫圈6	11	
27	GB/T97.1	Washer 6	垫圈6	11	
28	GB/T6170	Nut M6	螺母M6	2	
29	LG520D.15-012	Radio player connection plate	收放机连板	1	
30	GB/T818	Screw M4×16	螺钉M4×16	1	
31	GB/T6170	Nut M4	螺母M4	1	
32	GB/T97.1	Washer 4	垫圈4	1	
33	LG512D.15III-004	Cover	盖板	1	
34	LG520D.15-010	Absorber	减振垫	4	

XVII. Hood assembly

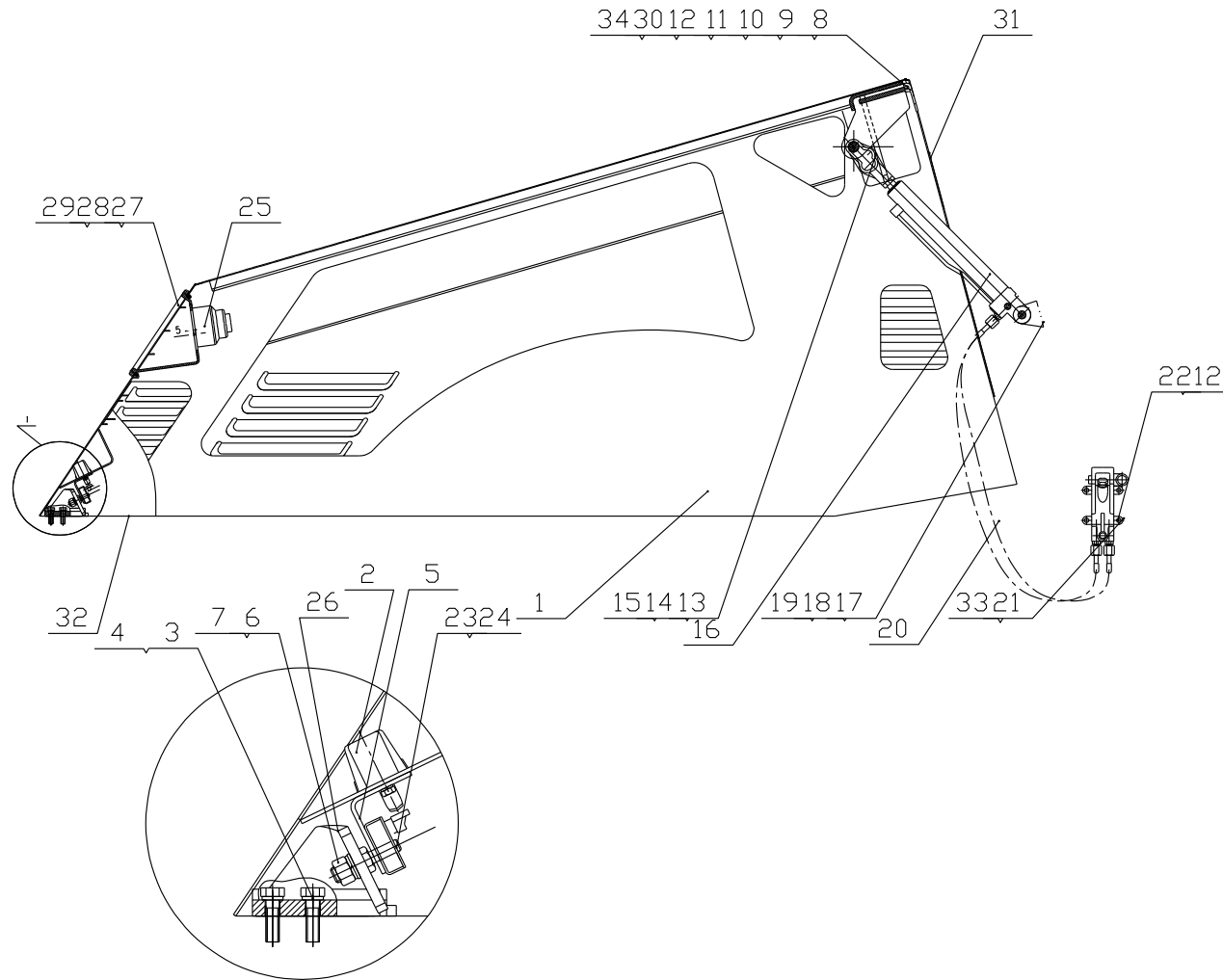




Fig.17		Hood assembly 机罩总成			Remarks
Item	当前 Current No.	English Description	Chinese Description	Qty	先前 Used No.
1	CDM512D.17IV.01	Hood assembly (general)	机罩焊合 (高原型)	1	
	LG512D.17III.01	Hood assembly (plateau)	机罩焊合 (通用型)	1	
2	LG521JNBS501-1	Door lock	门锁	1	
3	GB/T5783	Bolt M10×30	螺栓M10×30	2	
4	DIN6796	Washer 10	垫圈10	2	
5	LG520D.17-001	Lock board	锁板	1	
6	GB/T97.1	Washer 12	垫圈12	1	
7	GB/T6170	Nut M12	螺母M12	1	
8	LG520D.17.03	Gemel assembly	铰链装配总成	2	
9	GB/T5783	Bolt M10×40	螺栓M10×40	12	
10	GB/T97.1	Washer 10	垫圈10	6	
11	GB/T6170	Nut M10	螺母M10	12	
12	GB/T93	Washer 10	垫圈10	16	
13	GB/T882B型	Pin 25×90	销轴25×90	1	
14	GB/T91	Cotter pin 6.3×60	开口销6.3×60	1	
15	GB/T97.1	Washer 27	垫圈27	1	
16	YF03B.JZS	Hydraulic cylinder	液压缸	1	
17	GB/T882B型	Pin 20×80	销轴20×80	1	

Fig.17		Hood assembly 机罩总成			Remarks
Item	当前 Current No.	English Description	Chinese Description	Qty	先前 Used No.
18	GB/T91	Cotter pin 5×60	开口销5×60	1	
19	GB/T97.1	Washer 20	垫圈20	1	
20	YF01S.JZS-RG	Hose	软管	2	
21	YF01S.JZSD	Hood turn pump	机罩翻转泵	1	
22	GB/T5783	Bolt M10×25	螺栓M10×25	4	
23	GB/T5783	Bolt M6×16	螺栓M6×16	5	
24	GB/T93	Washer 6	垫圈6	5	
25	XP261	Single headlight	单大灯	2	
26	LG520D.17.02	Hood lock assembly	机罩锁座装配总成	1	
27	LG520D.17-002	Rear light seat	后灯座	2	
28	GB/T93	Washer 5	垫圈5	8	
29	GB/T6170	Nut M5	螺母M5	8	
30	LG520D.17-003	Adjusting shim	调整垫片	6	
31	H009	Door rubber strip	门胶条	2	
32	F002	Door frame rubber strip	门框胶条	1	
33	YF01S.JZS-SG	Hand rocker	手摇杆	1	
34	GB/T96.1	Washer 10	垫圈10	6	

## XVIII. Hydraulic steering system

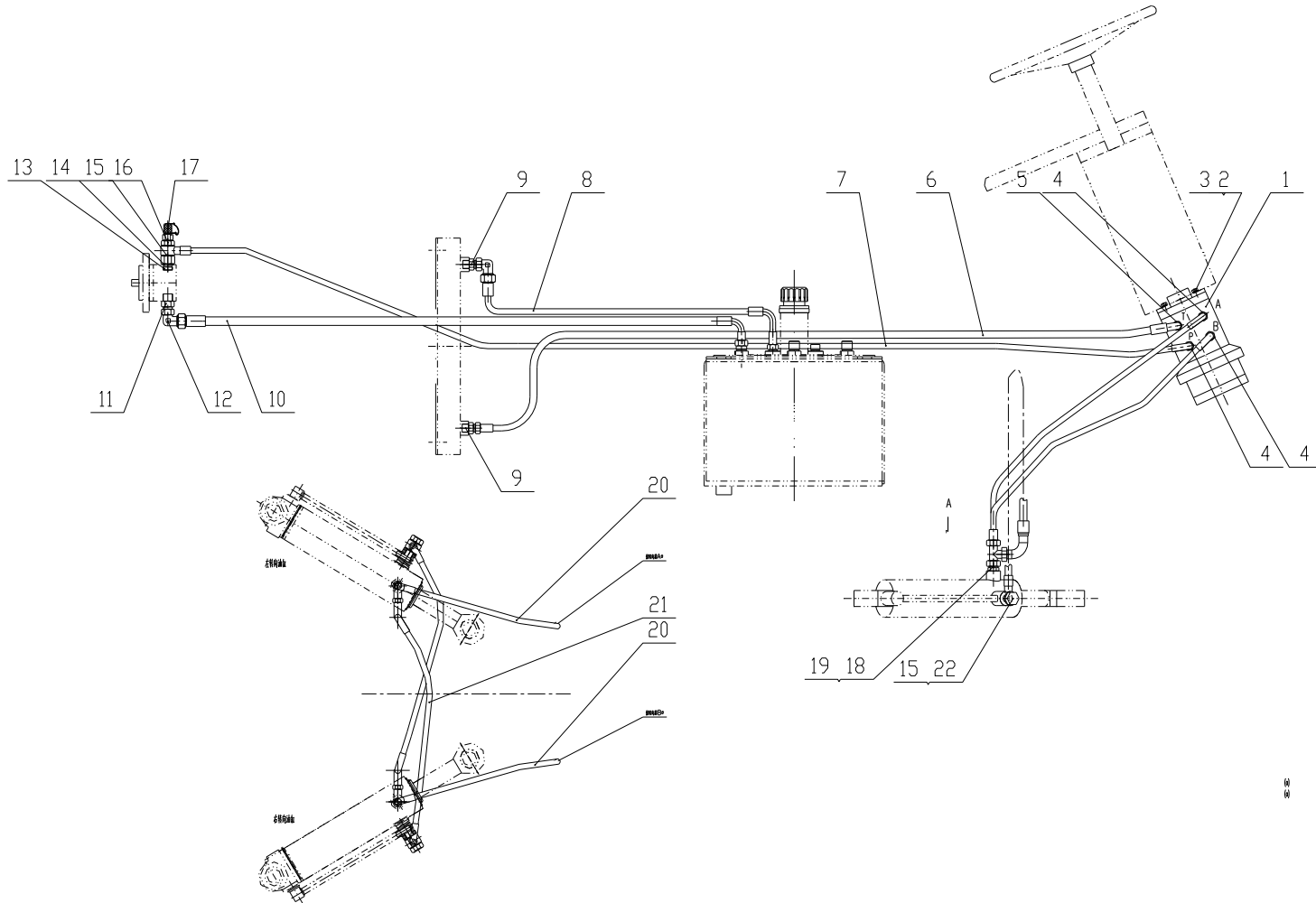


Fig.18		Hydraulic steering system 液压转向系统			Remarks
Item	Parts No.	English Description	Chinese Description	Qty	先前 Used No.
1	BZZ1-E315C	Hydraulic steering gear	全液压转向器	1	
2	GB/T5783	Bolt M10×25	螺栓 M10×25	4	
3	GB/T93	Washer 10	垫圈 10	4	
4	1CH-22-20	Connector	接头	3	
5	1CH-26-20	Connector	接头	1	
6	20411-26T*1W10*1200+RC	Hose from steering port T to oil cooler	转向器 T 口到油冷器软管	1	
7	20411-22T/70011-22*2W08*2450+RC	Hose assembly	胶管总成	1	
8	20411-26/20491-26*1W12*600+RC	Hose from oil cooler to oil tank	油冷器到油箱回油软管	1	
9	1CH-26-27(M27×1.5)	Connector	接头	2	
10	20491-30/20411-30*1W12*1800+RC	Hose from steering to oil tank	转向泵吸油到油箱软管	1	
11	1CH-30-33	Connector	接头	1	
12	2C9-30	Connector	接头	1	
13	LG520D.10-001	Connector	变径接头	1	
14	JB/T982-1977	Bonded washer 27	组合垫圈 27	1	
15	JB/T982-1977	Bonded washer 22	组合垫圈 22	6	
16	LG520D.10-002	Hollow bolt (M22×1.5)	空心螺栓 (M22×1.5)	1	
17	SMK20-M14*1.5/103591505	Pressure connector	测压接头	1	

Fig.18		Hydraulic steering system 液压转向系统			Remarks
Item	Parts No.	English Description	Chinese Description	Qty	先前 Used No.
18	1CH-22	Connector	接头	2	
19	CC-22	connector	接头	2	
20	20411-22*2W08*1450+RC	Hose assembly	胶管总成	2	
21	20491-22T/70011-22*2W08*1300+RC	Interconnection hose of left and right cylinders	左右油缸互通软管	2	
22	JB/T999	Hinged bolt	铰接螺栓 M22×1.5×48	2	

XIX. Scraper system

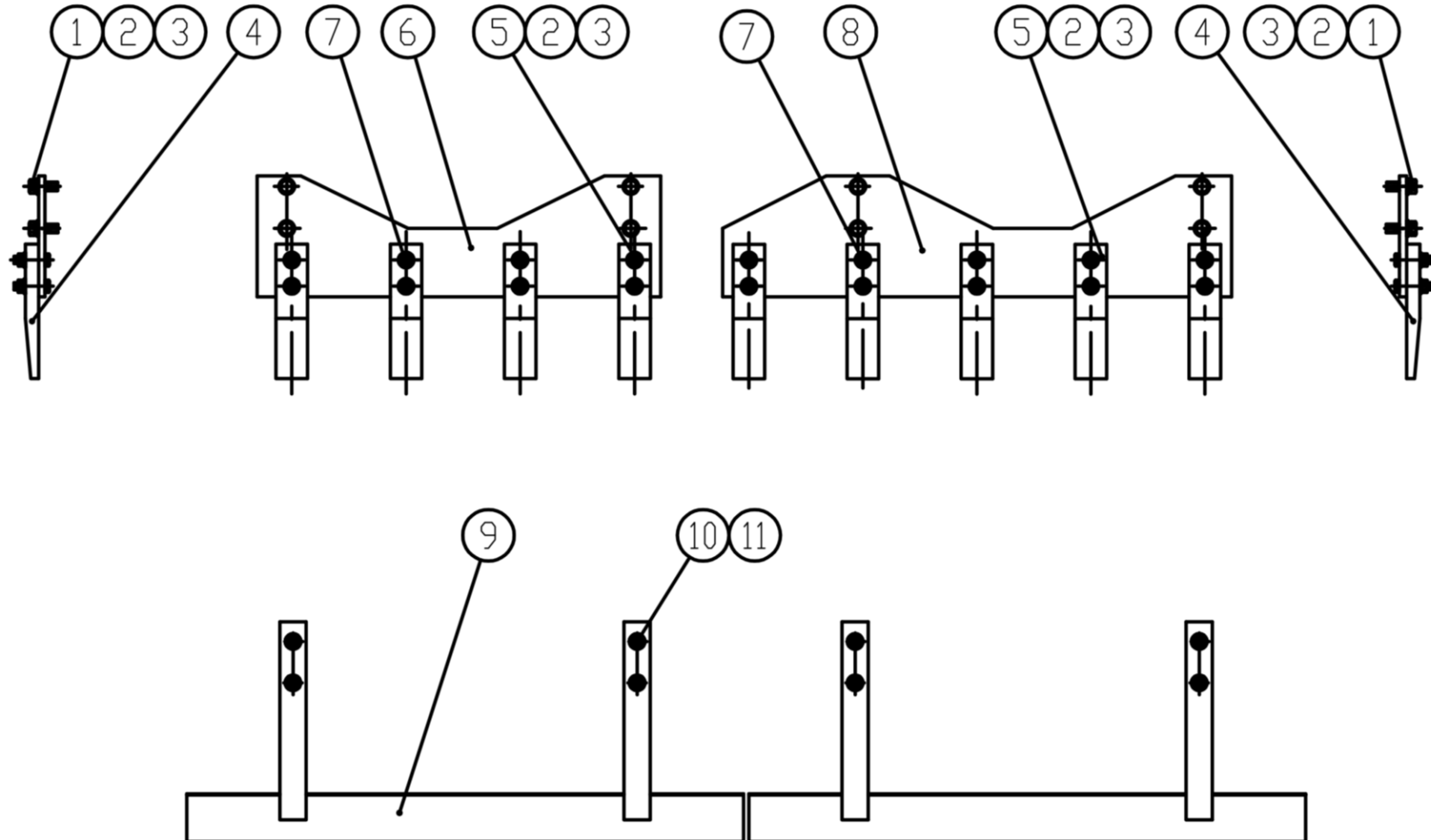


Fig.19		Scraper system 刮泥板系统			Remarks
Item	当前 Current No.	English Description	Chinese Description	Qty	先前 Used No.
1	GB/T5783	Bolt M16×40 (for gibbous drum)	螺栓 M16×40 (外包式凸块轮用)	16	
2	GB/T93	Washer 16 (for gibbous drum)	垫圈 16 (外包式凸块轮用)	52	
3	GB/T97.1	Washer 16 (for gibbous drum)	垫圈 16 (外包式凸块轮用)	52	
4	LG520A.91.04-001	Rear scraper tooth (for gibbous drum)	后刮泥齿 (外包式凸块轮用)	18	
5	GB/T5783	Bolt M16×55 (for gibbous drum)	螺栓 M16×55 (外包式凸块轮用)	36	
6	LG520D.31.02-001	Support plate (for gibbous drum)	支撑板 (外包式凸块轮用)	2	
7	GB/T6170	Nut M16 (for gibbous drum)	螺母 M16 (外包式凸块轮用)	36	
8	LG520D.31.01-001	Support plate (for gibbous drum)	支撑板 (外包式凸块轮用)	2	
9	LG520D.09.01	Scraper plate weldment (for standard drum)	刮泥板焊接(光轮用)	4	
10	DIN6796	Washer 16 (for standard drum)	垫圈 16 (光轮用)	16	
11	GB/T5783	Bolt M16×50 (for standard drum)	螺栓 M16×50(光轮用)	16	

## XX. Electric system

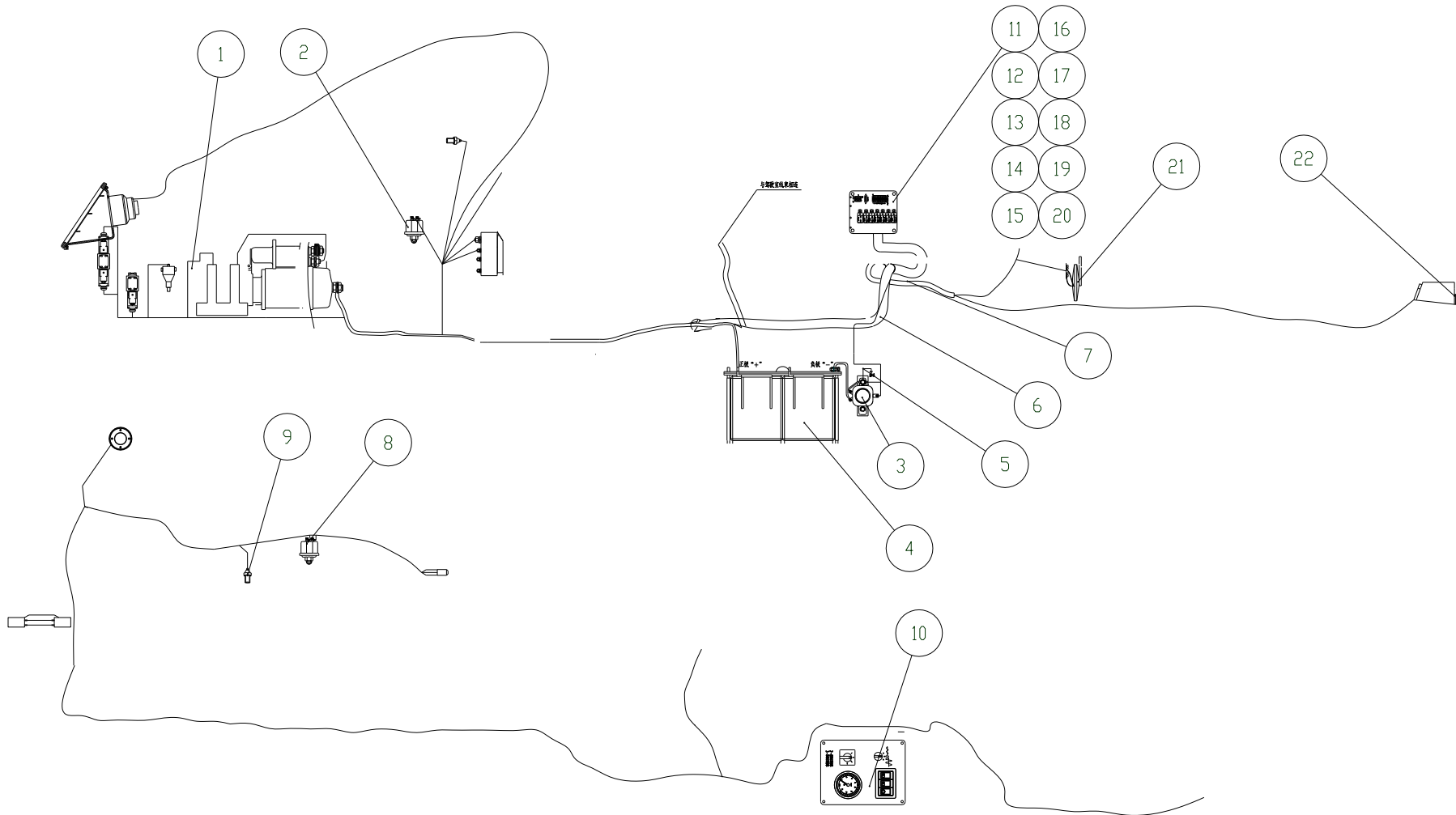




Fig.20		Electric system 电气系统			Remarks
Item	当前 Current No.	English Description	Chinese Description	Qty	先前 Used No.
1	LG520D.26-001	Starting relay	起动继电器	1	
2	LG512D.26.78	Water temperature sensor (alarm)	水温传感器带报警(NPT 1/2' )	1	
3	LG853.15.28	Power main switch DK238	电源总开关	1	
4	N120	Battery	蓄电池	2	
5	LG520D.26.04	Battery harness	电瓶线	1	
6	LG520D.26.06	Car body arness	车身线束	1	
7	LG520D.26.02	Panel harness	仪表台线束	1	
8	LG512D.26.79	Oil pressure sensor(alarm)	机油压力传感器带报警 ( Z 1/8' )	1	
9	LG520D.26-014	Speed sensor (M18×1.5×45)	转速传感器(M18×1.5×45)	1	
10	LG520D.26.03	Panel, switch, electric parts assembly	仪表.开关.电器元件板安装	1	
11	LG520D.26.05	Board &parts harness assembly	安装板及元件接线图	1	
12	LG520D.26-004	Fuse box BX508	六档保险盒 BX508	2	
13	LG520D.26-005	Flasher SG258B DC24V	电子闪光器 SG258B DC24V	1	
14	LG520D.26-006	Flameout switch HG4185-24V-1H/70A	熄火开关 HG4185-24V-1H/70A	1	
15	LG520D.26-007	Neutral relay HG4185-24V-1H/70A	中位继电器 HG4185-24V-1H/70A	1	
16	LG520D.26-008	Braking relay HG4185-24-1D/40A	制动继电器 HG4185-24-1D/40A	1	
17	LG520D.26-009	Time relay ST3PA-B DC24V	时间继电器 ST3PA-B DC24V	1	
18	LG520D.26-010	Upper & lower beam relayHG4185-24V-1H/70A	远近光继电器 HG4185-24V-1H/70A	1	

Fig.20		Electric system 电气系统			Remarks
Item	当前 Current No.	English Description	Chinese Description	Qty	先前 Used No.
19	LG520D.26-011	Vibrating Relay H4185-24V-1H/70A	振动继电器 H4185-24V-1H/70A	1	
20	LG520D.26-012	Singal fuse BX201 60A	单路保险 BX201 60A	1	
21	LG816.15.09	Tub type monophonic horn	单音盆式电喇叭	1	
22	LG810.15.07 (A)	Grouped Lamps	方组合灯	2	